

: THIS REPORT CREATED 20 Jan 2023 11:41

**Ship Detail**

Ship Name	<b>BULK SACHUEST</b>	Shiptype	<b>Bulk Carrier</b>
IMO/LR No.	<b>9483231</b>	Gross	<b>32,672</b>
Call Sign	<b>A8VD4</b>	Deadweight	<b>55,618</b>
MMSI No.	<b>636022222</b>	Year of Build	<b>2010</b>
Flag	<b>Liberia</b>	Status	<b>In Service/Commission</b>
Operator	<b>Phoenix Bulk Carriers US LLC</b>	Shipbuilder	<b>Hyundai-Vinashin Shipyard Co</b>

**Ownership**

Group Owner	<b>Bulk Partners Ltd</b>	Address Location	<b>United States Of America</b>	Company No.	<b>5617583</b>
Shipmanager	<b>Phoenix Bulk Carriers US LLC</b>	Address Location	<b>United States Of America</b>	Company No.	<b>5282368</b>
Operator	<b>Phoenix Bulk Carriers US LLC</b>	Address Location	<b>United States Of America</b>	Company No.	<b>5282368</b>
DOC Company	<b>Seamar Management SA</b>	Address Location	<b>Greece</b>	IMO Company No (DOC)	<b>5349351</b>
Registered Owner	<b>Bulk Sachuest Corp</b>	Address Location	<b>Marshall Islands</b>	IMO Registered Owner No	<b>6343589</b>
Technical Manager	<b>Seamar Management SA</b>	Address Location	<b>Greece</b>	Company No.	<b>5349351</b>
Bareboat Owner	<b>Not Applicable</b>	Address Location		Company No.	<b>9984588</b>

**Ownership History** Show extended history

Date	Name	Flag	Group Owner	Shipmanager	Operator	DOC Company	Registered Owner	Technical Manager	Bareboat Charterer	Price
2022-10	BULK SACHUEST	Liberia	Bulk Partners Ltd	Phoenix Bulk Carriers US LLC	Phoenix Bulk Carriers US LLC	Seamar Management SA	Bulk Sachuest Corp	Seamar Management SA	Not Applicable	
2022-08										\$17,000,000
2016-06			Quayside Maritime Partners							
2015-12	Clarke Quay						Clarke Quay			
2013-05						ZEABORN Ship Management		ZEABORN Ship Management		
2012-01						Wallem GmbH & Co KG				
2010-11	E. R. Brest	Liberia	ZEABORN Ship Management	ZEABORN Ship Management	ZEABORN Ship Management	Wallem Shipmanagement Ltd	ER Brest	Wallem GmbH & Co KG	Eighth Phoenix Shipping Inc	

Originally E. R. Brest;Newbuilding price \$47,900,000

**Registration, P&I, and Communications**

DOC Emails [rcp@seamar.gr](mailto:rcp@seamar.gr), [operations.bulk@seamar.gr](mailto:operations.bulk@seamar.gr), [technical.bulk@seamar.gr](mailto:technical.bulk@seamar.gr), [bulk@seamar.gr](mailto:bulk@seamar.gr), [safety.bulk@seamar.gr](mailto:safety.bulk@seamar.gr)

Port of Registry **Monrovia** Flag **Liberia**  
 Official Number **22222** Sat Com ID  
 Sat Com Ans Back Fishing Number  
 Current P&I Club **UK P&I**

**P&I Club History**

Date	P&I Club
------	----------

2022-10-13 UK P&amp;I

2010-11-01 Swedish Club

**Flag, Call Sign & MMSI History**

Date	Flag	Port of Registry	Call Sign	MMSI
2022-10	Liberia	Monrovia	A8VD4	636022222
2022-10	Germany	Hamburg	DIIT2	
2010-11	Liberia	Monrovia	A8VD4	636091985
2010-11	Germany	Hamburg		

**Construction Overview**

ShipType	<b>Bulk Carrier</b>	Built	<b>2010</b>
GT	<b>32,672</b>	Deadweight	<b>55,618</b>

**Alterations & Conversion****No Data Available****Arrangement**

Structure	Sequence (Bow to Stern)	Position	Type	Material	Length	Breadth
Compartment	01	Centre Or Only	Dry Cargo Hold	Steel (Unspecified)		
Compartment	02	Centre Or Only	Dry Cargo Hold	Steel (Unspecified)		
Compartment	03	Centre Or Only	Dry Cargo Hold	Steel (Unspecified)		
Compartment	04	Centre Or Only	Dry Cargo Hold	Steel (Unspecified)		
Compartment	05	Centre Or Only	Dry Cargo Hold	Steel (Unspecified)		
Hatch	01	Centre Or Only	Normal Hatch	N/A		
Hatch	02	Centre Or Only	Normal Hatch	N/A		
Hatch	03	Centre Or Only	Normal Hatch	N/A		
Hatch	04	Centre Or Only	Normal Hatch	N/A		
Hatch	05	Centre Or Only	Normal Hatch	N/A		
Hatch	06	Centre Or Only	Engine Room	N/A		

**Construction Detail**

Ship Type Group: Bulk Carrier-Supra/Ultramax; Statcode5: A21A2BC; Standard design: Hyundai 55BC; Hull Type: Double Bottom Entire Compartment Length; Hull Material: Steel; Hull Connections: Welded; Decks: 1 dk; Bulbous bow;

**Recycling Detail (Broken up ships only)****No Data Available****Service Constraints****No Data Available****Shipbuilder**

2010-11 [Hyundai-Vinashin Shipyard Co Ltd - Ninh Hoa](#) Yard/hull No.: S-006

**Sister Ships**

At most, the first fifty sister ships are returned. Click [here](#) to return all sister ships into Search Results.

LRNO	Ship Name	Status	Deadweight	GT	Built	Type	Yard No	Main Engine
<a href="#">9513830</a>	ANNAKI	IN SERVICE/COMMISSION	55443	32795	2012-03	Bulk Carrier	S046	6S50MC-C8
<a href="#">9635406</a>	ARUNA ECE	IN SERVICE/COMMISSION	55506	32715	2012-10	Bulk Carrier	6144	6S50MC-C
<a href="#">9635391</a>	ARUNA HULYA	IN SERVICE/COMMISSION	55582	32715	2012-07	Bulk Carrier	6143	6S50MC-C
<a href="#">9637296</a>	ARUNA ISMAIL	IN SERVICE/COMMISSION	55484	32715	2013-03	Bulk Carrier	6145	6S50MC-C
<a href="#">9513854</a>	AZISAI	IN SERVICE/COMMISSION	55415	32795	2012-09	Bulk Carrier	S048	6S50MC-C8
<a href="#">9483231</a>	BULK SACHUEST	IN SERVICE/COMMISSION	55618	32672	2010-11	Bulk Carrier	S-006	6S50MC-C
<a href="#">9524695</a>	CARIBOO	IN SERVICE/COMMISSION	55408	32795	2012-11	Bulk Carrier	S052	6S50MC-C8
<a href="#">9483255</a>	DISCOVERY	IN SERVICE/COMMISSION	55783	32672	2011-05	Bulk Carrier	S-008	6S50MC-C
<a href="#">9483229</a>	E. R. BORDEAUX	IN SERVICE/COMMISSION	55621	32672	2011-07	Bulk Carrier	S-005	6S50MC-C
<a href="#">9507790</a>	E. R. BRISTOL	IN SERVICE/COMMISSION	55659	32672	2011-07	Bulk Carrier	6126	6S50MC-C
<a href="#">9587879</a>	EQUINOX	IN SERVICE/COMMISSION	55660	31763	2012-01	Bulk Carrier	6078	6S50MC-C
<a href="#">9513842</a>	FAST	IN SERVICE/COMMISSION	55398	32795	2012-05	Bulk Carrier	S047	6S50MC-C8
<a href="#">9613666</a>	FU HAI HONG	IN SERVICE/COMMISSION	55648	32537	2011-08	Bulk Carrier	S057	6S50MC-C
<a href="#">9607019</a>	GLOVIS MAPLE	IN SERVICE/COMMISSION	55705	32545	2013-03	Bulk Carrier	6125	6S50MC-C8
<a href="#">9543615</a>	GLOVIS MARIA	IN SERVICE/COMMISSION	55705	32545	2012-09	Bulk Carrier	6123	6S50MC-C8
<a href="#">9607007</a>	GLOVIS MELODY	IN SERVICE/COMMISSION	55705	32545	2012-11	Bulk Carrier	6124	6S50MC-C8
<a href="#">9543603</a>	GLOVIS MERMAID	IN SERVICE/COMMISSION	55705	32545	2012-07	Bulk Carrier	6122	6S50MC-C8
<a href="#">9524683</a>	ILENAO	IN SERVICE/COMMISSION	55442	32795	2013-02	Bulk Carrier	S051	6S50MC-C8
<a href="#">9483217</a>	JPS BARCELONA	IN SERVICE/COMMISSION	55783	32672	2010-06	Bulk Carrier	S-004	6S50MC-C
<a href="#">9483188</a>	PRINCESS MARIA	IN SERVICE/COMMISSION	55783	32672	2009-07	Bulk Carrier	S-001	6S50MC-C
<a href="#">9491367</a>	SENANUR CEBI	IN SERVICE/COMMISSION	55660	31763	2011-05	Bulk Carrier	6076	6S50MC-C
<a href="#">9613678</a>	SHUO LONG 618	IN SERVICE/COMMISSION	55625	32537	2011-11	Bulk Carrier	S058	6S50MC-C
<a href="#">9507788</a>	STAR BRIGHT	IN SERVICE/COMMISSION	55569	32672	2010-07	Bulk Carrier	S-023	6S50MC-C
<a href="#">9595759</a>	THEOMETOR	IN SERVICE/COMMISSION	55695	32543	2011-07	Bulk Carrier	6099	6S50MC-C
<a href="#">9595761</a>	THEOTOKOS	IN SERVICE/COMMISSION	55698	32543	2011-09	Bulk Carrier	6100	6S50MC-C
<a href="#">9483190</a>	VALIANT	IN SERVICE/COMMISSION	55561	32672	2009-10	Bulk Carrier	S-002	6S50MC-C
<a href="#">9483279</a>	VENTURE PEARL	IN SERVICE/COMMISSION	55639	32672	2012-08	Bulk Carrier	S-010	6S50MC-C8
<a href="#">9483243</a>	VENTURE STAR	IN SERVICE/COMMISSION	55648	32672	2011-01	Bulk Carrier	S-007	6S50MC-C
<a href="#">9483267</a>	VICTORIOUS	IN SERVICE/COMMISSION	55648	32672	2011-09	Bulk Carrier	S-009	6S50MC-C
<a href="#">9513907</a>	WAIMEA	IN SERVICE/COMMISSION	55395	32795	2013-01	Bulk Carrier	S049	6S50MC-C8
<a href="#">9491379</a>	WOORYANG ELITE	IN SERVICE/COMMISSION	55660	31763	2011-06	Bulk Carrier	6077	6S50MC-C
<a href="#">9483205</a>	YANGTZE QUANTUM	IN SERVICE/COMMISSION	55783	32672	2010-01	Bulk Carrier	S-003	6S50MC-C
<a href="#">9524700</a>	YASA CANARY	IN SERVICE/COMMISSION	55446	32795	2013-01	Bulk Carrier	S053	6S50MC-C8
<a href="#">9513919</a>	YASA SPARROW	IN SERVICE/COMMISSION	55446	32795	2013-01	Bulk Carrier	S050	6S50MC-C8

### Status History

Date	Status
2010-11-05	In Service/Commission
2010-07-30	Launched
2010-05-03	Keel Laid
2009-12-00	Under Construction
2007-10-26	On Order/Not Commenced

### Supplementary Features

## Feature

BWMP(T)  
BC-A  
CSR  
ESP

IWS	
Grab	
Spec Ho 2 & 4	
Fuel Consumption Speed - Current Value	<b>14.50</b>
Total Fuel Consumption - Current Value	<b>32.50</b>
Total fuel capacity, in cubic metres	<b>1917.00</b>
Boiler Manufacturer	<b>Kangrim Heavy Industries</b>
Propeller Manufacturer	<b>Hyundai Heavy</b>

### Dimensions

Length Overall	<b>187.800</b>	Length (BP)	<b>182.500</b>
Length (Reg)	<b>183.060</b>	Bulbous Bow	<b>Yes</b>
Breadth Extreme	<b>32.310</b>	Breadth Moulded	<b>32.260</b>
Draught	<b>12.868</b>	Depth	<b>18.300</b>
Keel To Mast Height	<b>49.000</b>		
Displacement	<b>66158</b>	T/CM	<b>57.1</b>

### Tonnages

Tonnage Type	<b>One tonnage, unspecified</b>	Tonnage System	<b>New System (International 1969)</b>
Effective Date	<b>2010-11</b>		
Gross Tonnage (GT)	<b>32,672</b>	Net Tonnage (NT)	<b>18,529</b>
Deadweight (DWT)	<b>55,618</b>	Compensated Gross Tonnage (CGT)	<b>0</b>
Formula Deadweight	<b>47,567</b>	Light Displacement Tonnage (LDT)	<b>10,540</b>

### Cargo Overview

Grain	<b>70,733</b>	Bale	<b>69,550</b>	Liquid	<b>0</b>	Gas	<b>0</b>
TEU	<b>0</b>	TEU 14t	<b>0</b>	Insulated	<b>0</b>	Passengers	<b>0</b>
Bollard Pull (t)	<b>0</b>						

### Capacities

Grain 70,733; Bale 69,550; Segregated Ballast 29,724

### Cargo Handling Gear

4 Cranes of 30 tonnes SWL

### Compartments

5 Steel (Unspecified) Centre Or Only Dry Cargo Hold(s)

### Hatches

5 Centre Or Only Normal Hatch 0.00m long by 0.00m breadth, 1 Centre Or Only Engine Room

### Ro-Ro (Lanes, Ramps & Doors)



No Data Available

### Specialist



No Data Available

### Tanks



No Data Available



## Machinery Overview

1 oil engine driving 1 FP propeller at 127 rpm Total Power: Mcr 9,480kW (12,889hp) Service Speed: 14.50kts Speed & Consumption: 14.50 knots on 32.50 tonnes per day

## Auxiliary Engines

Design: Hyundai Himsen, Engine Builder: Hyundai Himsen 3 x 6H17/28, 4 Stroke 6Cy. 170 x 280, Mcr: 690 kW

## Auxiliary Generators

3 x 650kW a.c.

## Boilers



No Data Available

## Bunkers

Fuel: distillate fuel: 110 cu m, residual fuel: 1,807 cu m consumption: 34.00 tonnes per day

**Speed (kn) At Consumption (t)**

14.50	32.50
-------	-------

## Prime Mover Detail

Design: MAN-B&W (Group: MAN-B&W), Engine Builder: Doosan Engine Co Ltd - South Korea 1 x 6S50MC-C, 2 Stroke, Single Acting, In-Line (Vertical) 6 Cy. 500 x 2000, Mcr: 9,480 kW (12,889 hp) at 127 rpm

## Thrusters



No Data Available

## Photographs



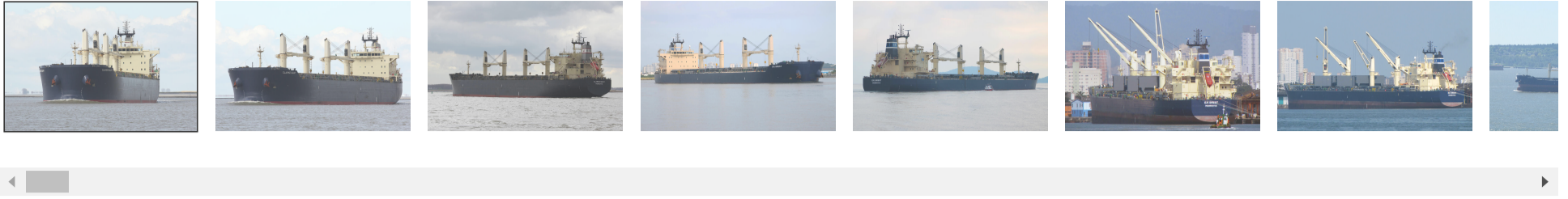
Photo 1 of 264

CLARKE QUAY

Photo Date: 2016-04-23

Copyright: STAN MULLER





© 2023 IHS Global Limited. IHS Global Limited assumes no responsibility and shall not be liable to any person for any loss, damage or expense caused by reliance on the information or advice in this document or howsoever provided, unless that person has a contract with IHS Global Limited and in that case any responsibility or liability is exclusively on the terms and conditions set out in that contract.