

## SHIP DETAIL

Ship Name	<b>TOTONNO BOTTIGLIERI</b>	Shiptype	<b>Crude/Oil Products Tanker</b>
IMO/LR No.	<b>9439400</b>	Gross	<b>60,185</b>
Call Sign	<b>ICNT</b>	Deadweight	<b>108,870</b>
MMSI No.	<b>247293500</b>	Year of Build	<b>2010</b>
Flag	<b>Italy</b>	Status	<b>In Service/Commission</b>
Operator	<b>Rizzo Bottiglieri De Carlini</b>	Shipbuilder	<b>Hudong-Zhonghua Shipbui...</b>



## COMMERCIAL HISTORY

☐ Show extended history

Date	Name	Flag	Group Owner	Operator	Manager	Registered Owner	DOC	Price
2011-02							Rizzo Bottiglieri De Carlini	
2010-09							Unknown	
2010-08	TOTONNO BOTTIGLIERI	Italy	Rizzo Bottiglieri De Carlini	Rizzo Bottiglieri De Carlini	Rizzo Bottiglieri De Carlini	Rizzo Bottiglieri De Carlini		

**Originally TOTONNO BOTTIGLIERI; Newbuilding price \$60,000,000**

## REGISTRATION, P&I, AND COMMUNICATIONS

Port of Registry	<b>Naples</b>	Flag	<b>Italy</b>
Official Number	<b>491</b>	Sat Com ID	<b>424703173</b>
Sat Com Ans Back		Fishing Number	
Current P&I Club	<b>Steamship Mutual</b>		

### P&I Club History

Date	P&I Club
2017-11-21	Steamship Mutual
2017-09-21	Steamship Mutual
2015-03-10	Steamship Mutual
2012-02-20	UK P&I Club

Date	Flag	Port of Registry	Call Sign	MMSI
2010-08	Italy	Naples	ICNT	247293500

## DIMENSIONS

Length Overall	<b>243.000</b>	Length (BP)	<b>233.000</b>
Length (Reg)	<b>234.790</b>	Bulbous Bow	<b>Yes</b>
Breadth Extreme	<b>42.032</b>	Breadth Moulded	<b>42.000</b>
Draught	<b>15.350</b>	Depth	<b>22.000</b>
Keel to Mast Height	<b>46.000</b>		
Displacement	<b>127355</b>	T/CM	<b>91.3</b>

See also Specialist in Cargo & Gear for tanker specific dimensions

## TONNAGES

Tonnage Type	<b>One tonnage, unspecified</b>	Tonnage System	<b>New System (International 1969)</b>
Effective Date	<b>2010-08</b>	Effective Date	<b>2010-08</b>
Gross Tonnage (GT)	<b>60,185</b>	Net Tonnage (NT)	<b>33,762</b>
Deadweight (DWT)	<b>108,870</b>	Compensated Gross Tonnage (CGT)	<b>0</b>
Formula Deadweight	<b>95,039</b>	Light Displacement Tonnage (LDT)	<b>18,485</b>

## CARGO OVERVIEW

Grain	<b>0</b>	Bale	<b>0</b>	Liquid	<b>123,030</b>	Gas	<b>0</b>
TEU	<b>0</b>	TEU 14t	<b>0</b>	Insulated	<b>0</b>		

## CAPACITIES

Liquid @ 98% 123,030; Segregated Ballast 38,830; Slops 2,960; Cargo heating coils

## CARGO HANDLING GEAR

Cargo Pumps 3 @ 2,500 M3/hr

## COMPARTMENTS

## HATCHES

**RO-RO (LANES, RAMPS & DOORS)****SPECIALIST**

COW, IGS, SBT (Protective), Closed Loading, VRS - Vapour Recovery System, Slop Capacity **2,960**, Stainless Steel Heating Coils, 66 Maximum Temp (Centigrade), SPM Equipped, 2 Tongue Bow Stoppers, 250t SWL, Flash Point Under 60c, 3 Lines (manifolds) per Side, **42.10m** Mid Point Manifold Forward (Light), **72.60m** Parallel Body Length (Light), **30.50m** Mid Point Manifold Aft (Light), **56.50m** Mid Point Manifold Forward (Ballast), **104.60m** Parallel Body Length (Ballast), **48.10m** Mid Point Manifold Aft (Ballast), **76.50m** Mid Point Manifold Forward (Laden), **141.60m** Parallel Body Length (Laden), **65.10m** Mid Point Manifold Aft (Laden), **119.50m** Bow to Centre Manifold, **0.406m** Manifold Discharge Diameter

**TANKS**

6 Steel (Unspecified) Port Cargo Tank(s), 6 Steel (Unspecified) Starboard Cargo Tank(s), 1 Steel (Unspecified) Port Slop Tank (s), 1 Steel (Unspecified) Starboard Slop Tank(s), 3 Grades (cargo segregations), Stainless Steel Heating Coils

Type	Coating
Cargo Tank	Epoxy
Slop Tank	Epoxy

**TOWAGE****MACHINERY OVERVIEW**

1 oil engine driving 1 FP propeller at 105 rpm Total Power: Mcr 14,280kW (19,415hp), Csr 12,138kW (16,503hp) Service Speed: 14.70kts Speed & Consumption: 14.50 knots on 49.00 tonnes per day

**AUXILIARY ENGINES**

**Design:** Daihatsu, **Engine Builder:** Daihatsu  
**3 x 6DK-20**, 4 Stroke 6Cy.  
 200 x 300, Mcr: 720 kW

**AUXILIARY GENERATORS**

3 x 680kW a.c.

**BOILERS****BUNKERS**

**Fuel:**Capacity - Distillate Fuel: 162 cu m, Residual Fuel: 3,027 cu m

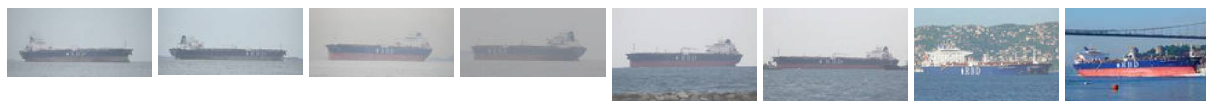
Speed (kn)	At Consumption (t)
14.50	49.00

**PRIME MOVER DETAIL**

**Design:** MAN-B&W, **Engine Builder:** Hudong Heavy Machinery Co Ltd - China  
**1 x 7S60MC**, 2 Stroke, Single Acting, In-Line (Vertical)  
 7 Cy. 600 x 2292, Mcr: 14,280 kW (19,415 hp) at 105 rpm  
 , Made 2010-07

**THRUSTERS****TRADING AREAS LAST 12 MONTHS**

Far East  
 Gulf - Red Sea - India  
 South East Asia

**PHOTOGRAPHS**

[Play Slideshow](#)

[Previous Photo](#) [Next Photo](#)



Totonno Bottigliari

© 2019 IHS Global Limited. IHS Global Limited assumes no responsibility and shall not be liable to any person for any loss, damage or expense caused by reliance on the information or advice in this document or howsoever provided, unless that person has a contract with IHS Global Limited and in that case any responsibility or liability is exclusively on the terms and conditions set out in that contract.

Photo Date: 2011-07-07

Copyright:  
hasenpusch-  
photo@t-online.de