


: THIS REPORT CREATED 18 Oct 2021 08:19

Ship Detail

Ship Name	MITO	Shiptype	Container Ship (Fully Cellular)	
IMO/LR No.	9319571	Gross	9,910	
Call Sign	CQEW9	Deadweight	13,760	
MMSI No.	255806508	Year of Build	2006	
Flag	Portugal (Mar)	Status	In Service/Commission	
Operator	Unifeeder A/S	Shipbuilder	Aker Tulcea SC SA	

Ownership

Group Owner	Carsten Rehder Schiffsmakler	Address Location	Germany	Company No.	0192009
Shipmanager	TB Marine Cont Shipmanagement	Address Location	Germany	Company No.	6012512
Operator	Unifeeder A/S	Address Location	Denmark	Company No.	0783127
DOC Company	TB Marine Cont Shipmanagement	Address Location	Germany	IMO Company No (DOC)	6012512
Registered Owner	Mito GmbH & Co KG	Address Location	Germany	IMO Registered Owner No	4093431
Technical Manager	TB Marine Cont Shipmanagement	Address Location	Germany	Company No.	6012512
Bareboat Owner	Mito International Shipholding	Address Location	Liberia	Company No.	6207207

Ownership History

☒ Show extended history

Date	Name	Flag	Group Owner	Shipmanager	Operator	DOC Company	Registered Owner	Price	Seq
2021-03		Portugal (Mar)							00
2021-03	MITO								00
2021-02						TB Marine Cont Shipmanagement			00
2021-02				TB Marine Cont Shipmanagement					00
2020-10						Thome Shipmanagement Germany.			94
2016-03					Unifeeder A/S				00
2012-04					CMA CGM SA The French Line				91
2011-02	Mito Strait								91
2011-02					Carsten Rehder Schiffsmakler				92
2009-06	EI Temerario								92
2006-08					US Lines LLC				93
2006-08	Kookaburra 1								93
2006-07						Carsten Rehder Schiffsmakler			95
2006-02							Mito GmbH & Co KG		00
2006-02			Carsten Rehder Schiffsmakler						00
2006-02					NYK Line				94
2006-02		Antigua & Barbuda							94
2006-02	EI Temerario								94
2006-02				Carsten Rehder Schiffsmakler					95
2006-02					Delphis NV				95
2006-02		Germany							95
2005-11	Mito Strait								95

Originally Mito Strait;Launched as Mito Strait (2005)

Registration, P&I, and Communications

Port of Registry	Madeira	Flag	Portugal (Mar)
Official Number	TEMP715M	Sat Com ID	
Sat Com Ans Back		Fishing Number	
Current P&I Club	Swedish Club, The		

Bareboat chartered from Germany

P&I Club History

Date	P&I Club
2021-02-20	Swedish Club, The
2018-03-07	GARD AS
2016-02-20	Hanseatic Underwriters
2015-12-08	GARD AS
2013-01-22	GARD AS
2013-01-07	Swedish Club, The
2006-09-27	GARD AS

Flag, Call Sign & MMSI History

Date	Flag	Port of Registry	Call Sign	MMSI
2021-03	Portugal (Mar)	Madeira	CQEW9	255806508
2006-02	Antigua & Barbuda	Saint John's	V2BN2	304771000
2006-02	Germany			

Construction Overview

ShipType	Container Ship (Fully Cellular)	Built	2006
GT	9,910	Deadweight	13,760

Alterations & Conversion

Arrangement

Construction Detail

Ship Type Group:Containership-Regional Feeder; Statcode5:A33A2CC; Standard design:CV 1100 Plus; Hull Type:Double Hull; Hull Material:Steel; Hull Connections:Welded; Decks:1 dk; Bulbous bow; FS Ice Class 1C

Recycling Detail (Broken up ships only)

Service Constraints

Shipbuilder

2006-02 [SC Aker Tulcea SA - Tulcea](#) Yard/hull No.: 315

Sister Ships

At most, the first fifty sister ships are returned. Click [here](#) to return all sister ships into Search Results.

LRNO	Ship Name	Status	Deadweight	GT	Built	Type	Yard No	Main Engine
9499010	A MIZUHO	IN SERVICE/COMMISSION	13676	9954	2008-06	Container Ship (Fully Cellular)	02C-031	6S50MC-C
9379636	ABTIN 1	IN SERVICE/COMMISSION	13760	9957	2008-09	Container Ship (Fully Cellular)	04-0426	7L58/64
9338307	ACACIA LIBRA	IN SERVICE/COMMISSION	13658	9954	2007-08	Container Ship (Fully Cellular)	02C-018	6S50MC-C
9338292	ACACIA VIRGO	IN SERVICE/COMMISSION	13727	9954	2007-07	Container Ship (Fully Cellular)	02C-017	6S50MC-C
9359105	AFRICA SUN	IN SERVICE/COMMISSION	13719	9956	2006-01	Container Ship (Fully Cellular)	1100TEU-7	7L58/64
9359117	ASIAN MOON	IN SERVICE/COMMISSION	13670	9956	2006-05	Container Ship (Fully Cellular)	1100TEU-8	7L58/64
9245689	ASIAN TRADER	IN SERVICE/COMMISSION	13732	9966	2003-03	Container Ship (Fully Cellular)	1100TEU-2	7L58/64
9306835	ASTRID L	IN SERVICE/COMMISSION	13760	9931	2006-04	Container Ship (Fully Cellular)	03-0402	7L58/64
9330850	ATLANTIC EXPRESS	IN SERVICE/COMMISSION	13702	9940	2007-06	Container Ship (Fully Cellular)	20040316	7L58/64
9330848	ATLANTIC GENEVA	IN SERVICE/COMMISSION	13626	9940	2007-05	Container Ship (Fully Cellular)	20040315	7L58/64
9378929	ATLANTIC MERCHANT	IN SERVICE/COMMISSION	13652	9940	2008-06	Container Ship (Fully Cellular)	20040318	7L58/64
9327578	BENEDIKT	IN SERVICE/COMMISSION	13734	9957	2006-01	Container Ship (Fully Cellular)	04-0402	7L58/64
9406934	BOMAR REBECCA	IN SERVICE/COMMISSION	13760	9957	2008-10	Container Ship (Fully Cellular)	04-0423	7L58/64
9265586	CMA CGM AGADIR	IN SERVICE/COMMISSION	13858	9966	2003-04	Container Ship (Fully Cellular)	01-0102	7L58/64
9259836	CMA CGM TANGER	IN SERVICE/COMMISSION	13702	9966	2003-10	Container Ship (Fully Cellular)	1100TEU-4	7L58/64
9364356	CONTSHIP AIR	IN SERVICE/COMMISSION	13715	9940	2006-11	Container Ship (Fully Cellular)	20040321	7L58/64
9364344	CONTSHIP BEE	IN SERVICE/COMMISSION	13690	9940	2006-06	Container Ship (Fully Cellular)	20040320	7L58/64
9347956	CONTSHIP DON	IN SERVICE/COMMISSION	13797	9948	2006-05	Container Ship (Fully Cellular)	DY201	7L58/64
9507702	CONTSHIP ERA	IN SERVICE/COMMISSION	13918	9909	2009-12	Container Ship (Fully Cellular)	20040327	7L58/64
9507714	CONTSHIP FOX	IN SERVICE/COMMISSION	13874	9909	2009-08	Container Ship (Fully Cellular)	20040328	7L58/64
9338278	CONTSHIP KEY	IN SERVICE/COMMISSION	13710	9954	2006-12	Container Ship (Fully Cellular)	02C-15	6S50MC-C
9403451	CONTSHIP LEO	IN SERVICE/COMMISSION	13803	9957	2008-10	Container Ship (Fully Cellular)	KA411	7L58/64CD
9346562	CONTSHIP LEX	IN SERVICE/COMMISSION	13760	9956	2006-09	Container Ship (Fully Cellular)	1100TEU-9	7L58/64
9306249	CONTSHIP MED	IN SERVICE/COMMISSION	13872	9957	2004-12	Container Ship (Fully Cellular)	01-0104	7L58/64
9373905	CONTSHIP NEW	IN SERVICE/COMMISSION	13760	9957	2007-08	Container Ship (Fully Cellular)	KA406	7L58/64
9373917	CONTSHIP OAK	IN SERVICE/COMMISSION	13781	9957	2007-11	Container Ship (Fully Cellular)	KA407	7L58/64
9324978	CONTSHIP ONO	IN SERVICE/COMMISSION	13798	9957	2007-01	Container Ship (Fully Cellular)	04-0408	7L58/64
9435521	CONTSHIP PAX	IN SERVICE/COMMISSION	13720	9948	2008-03	Container Ship (Fully Cellular)	DY207	7L58/64
9388338	CONTSHIP RAY	IN SERVICE/COMMISSION	13760	9957	2008-07	Container Ship (Fully Cellular)	04-0421	7L58/64
9347982	CONTSHIP TEN	IN SERVICE/COMMISSION	13699	9948	2007-05	Container Ship (Fully Cellular)	DY204	7L58/64

9395616	CONTSHIP TOP	IN SERVICE/COMMISSION	13750	9940	2008-04	Container Ship (Fully Cellular)	20040324	7L58/64
9379026	CONTSHIP UNO	IN SERVICE/COMMISSION	13834	9940	2007-09	Container Ship (Fully Cellular)	20040319	7L58/64
9434802	CONTSHIP VIE	IN SERVICE/COMMISSION	13699	9948	2007-10	Container Ship (Fully Cellular)	DY206	7L58/64
9395599	CONTSHIP VOW	IN SERVICE/COMMISSION	13750	9940	2007-09	Container Ship (Fully Cellular)	20040322	7L58/64
9435533	CONTSHIP WAY	IN SERVICE/COMMISSION	13720	9948	2008-05	Container Ship (Fully Cellular)	DY208	7L58/64
9395604	CONTSHIP WIN	IN SERVICE/COMMISSION	13809	9940	2008-02	Container Ship (Fully Cellular)	20040323	7L58/64
9434797	CONTSHIP ZOE	IN SERVICE/COMMISSION	13758	9948	2007-06	Container Ship (Fully Cellular)	DY205	7L58/64
9406843	DEVON	IN SERVICE/COMMISSION	13747	9957	2008-03	Container Ship (Fully Cellular)	04-0420	7L58/64
9324942	FESCO ASKOLD	IN SERVICE/COMMISSION	13806	9957	2006-04	Container Ship (Fully Cellular)	04-0405	7L58/64
9301562	GEESKE	IN SERVICE/COMMISSION	13727	9956	2005-11	Container Ship (Fully Cellular)	1100TEU-6	7L58/64
9332729	GLORY FORTUNE	IN SERVICE/COMMISSION	13979	9928	2006-12	Container Ship (Fully Cellular)	04-0414	7L58/64
9338280	GLORY OCEAN	IN SERVICE/COMMISSION	13702	9924	2007-02	Container Ship (Fully Cellular)	02C-016	6S50MC-C
9306263	HADDOCK	IN SERVICE/COMMISSION	13827	9957	2005-05	Container Ship (Fully Cellular)	01-0106	7L58/64
9306275	HALIBUT	IN SERVICE/COMMISSION	13779	9957	2005-07	Container Ship (Fully Cellular)	01-0107	7L58/64
9316098	HAMBURG TRADER	IN SERVICE/COMMISSION	13710	9957	2005-11	Container Ship (Fully Cellular)	03-0403	7L58/64
9405100	IBERIAN EXPRESS	IN SERVICE/COMMISSION	13760	9957	2008-06	Container Ship (Fully Cellular)	04-0424	7L58/64
9405112	INDIAN EXPRESS	IN SERVICE/COMMISSION	13760	9957	2008-10	Container Ship (Fully Cellular)	04-0425	7L58/64CD
9332717	IONIAN EXPRESS	IN SERVICE/COMMISSION	13797	9957	2006-11	Container Ship (Fully Cellular)	04-0413	7L58/64
9327566	IRIS MIKO	IN SERVICE/COMMISSION	13807	9957	2005-09	Container Ship (Fully Cellular)	04-0401	7L58/64
9327592	IRIS PAOAY	IN SERVICE/COMMISSION	13751	9957	2006-07	Container Ship (Fully Cellular)	04-0404	7L58/64

Status History

Date	Status
2019-02-13	In Service/Commission
2018-11-05	In Casualty Or Repairing
2006-02-01	In Service/Commission
2005-11-19	Launched
2004-09-30	Keel Laid
2004-03-00	On Order/Not Commenced

Supplementary Features

Feature

Container: fixed guides

Fitted for ref containers

IWS

Container rows: 9

FS Ice Class 1C

Total Fuel Consumption - Current Value38.50

Fuel Consumption Speed - Current Value19.00

Boiler ManufacturerHTI-Gesab

Propeller ManufacturerMAN Alpha

Total fuel capacity, in cubic metres1400.00

Dimensions

Length Overall	147.840	Length (BP)	140.300
Length (Reg)	143.200	Bulbous Bow	Yes
Breadth Extreme	23.280	Breadth Moulded	23.250
Draught	8.506	Depth	11.500
Keel To Mast Height	45.200		
Displacement	18987	T/CM	28.0

Tonnages

Tonnage Type	One tonnage, unspecified	Tonnage System	New System (International 1969)
Effective Date	2006-02		
Gross Tonnage (GT)	9,910	Net Tonnage (NT)	5,032
Deadweight (DWT)	13,760	Compensated Gross Tonnage (CGT)	0
		Light Displacement Tonnage (LDT)	5,227
Formula Deadweight	16,562		

Cargo Overview

Grain	16,000	Bale	16,000	Liquid	0	Gas	0
TEU	1,118	TEU 14t	730	Insulated	0	Passengers	0
Bollard Pull (t)	0						

Capacities

Grain 16,000; Bale 16,000; Segregated Ballast 5,054; TEU: 1,118 TEU @14:730 C Ho 334 TEU C Dk 784 TEU incl 220 ref C

Cargo Handling Gear

Gearless

Compartments

Hatches

Ro-Ro (Lanes, Ramps & Doors)

Specialist

Tanks

Machinery Overview

1 oil engine reduction geared to screw shaft driving 1 CP propeller Total Power: Mcr 9,600kW (13,052hp)Service Speed: 19.80kts Speed & Consumption: 19.00 knots on 38.50 tonnes per day

Auxiliary Engines

Design: Man-B&W, Engine Builder: Man-B&W 3 x 7L16/24, Mcr: 700 kW

Auxiliary Generators

3 x 646kW 450V a.c., 1 x 1,400kW 450V a.c. main engine driven

Boilers

Bunkers

Fuel: distillate fuel: 200 cu m, residual fuel: 1,200 cu m

Speed (kn)	At Consumption (t)
19.00	38.50

Prime Mover Detail

Design: MAN (Group: MAN-B&W), Engine Builder: Hudong Heavy Machinery Co Ltd - China 1 x 8L48/60B, 4 Stroke, Single Acting, In-Line (Vertical) 8 Cy. 480 x 600, Mcr: 9,600 kW (13,052 hp) at 500 rpm

Thrusters

1 Tunnel thruster (f) 700kW(952bhp)

Photographs

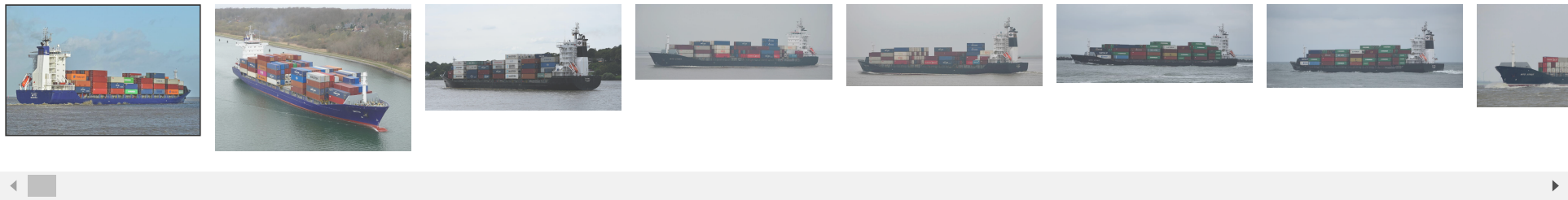


Photo 1 of 1042

MITO

Photo Date: 2021-04-02

Copyright: hasenpusch-photo@t-online.de



© 2021 IHS Global Limited. IHS Global Limited assumes no responsibility and shall not be liable to any person for any loss, damage or expense caused by reliance on the information or advice in this document or howsoever provided, unless that person has a contract with IHS Global Limited and in that case any responsibility or liability is exclusively on the terms and conditions set out in that contract.