

: THIS REPORT CREATED 30 Dec 2021 08:15

Ship Detail

Ship Name	PAGANELLA	Shiptype	Vehicles Carrier
IMO/LR No.	9427926	Gross	47,020
Call Sign	ZDNC7	Deadweight	11,454
MMSI No.	236111886	Year of Build	2009
Flag	Gibraltar	Status	In Service/Commission
Operator	Laeisz Reederei	Shipbuilder	Yangfan Group Co Ltd



Ownership

Group Owner	Jitsugyo S	Address Location	Japan	Company No.	5274721
Shipmanager	Laeisz Reederei	Address Location	Germany	Company No.	1475418
Operator	Laeisz Reederei	Address Location	Germany	Company No.	1475418
DOC Company	Laeisz Reederei	Address Location	Germany	IMO Company No (DOC)	1475418
Registered Owner	Janus Shipping SA	Address Location	Germany	IMO Registered Owner No	1192372
Technical Manager	Laeisz Reederei	Address Location	Germany	Company No.	1475418
Bareboat Owner	Not Applicable	Address Location		Company No.	9984588

Ownership History

☐ Show extended history

Date	Name	Flag	Group Owner	Shipmanager	Operator	DOC Company	Registered Owner	Price
2017-12		Gibraltar	Jitsugyo S				Janus Shipping SA	
2016-06		Germany						
2014-09	PAGANELLA				Laeisz Reederei			
2012-09		Gibraltar				Laeisz Reederei		
2009-10	CSAV Rio Illapel	Liberia		Laeisz Reederei	CSAV	Laeisz Reederei	Paganella GmbH & Co KG	
2009-08			Laeisz F Schiffahrts mbH & Co					

Originally CSAV Rio Illapel;Newbuilding price \$50,000,000

Registration, P&I, and Communications

DOC Emails	<a href="mailto:contact@laeisz.de">contact@laeisz.de</a>		
Port of Registry	Gibraltar	Flag	Gibraltar
Official Number	94279426	Sat Com ID	
Sat Com Ans Back		Fishing Number	
Current P&I Club	Steamship Mutual		

P&I Club History

Date	P&I Club
2014-07-02	Steamship Mutual
2013-01-14	Steamship Mutual
2009-11-09	Steamship Mutual

Flag, Call Sign & MMSI History

Date	Flag	Port of Registry	Call Sign	MMSI
2017-12	Gibraltar	Gibraltar	ZDNC7	236111886
2016-06	Germany	Rostock		
2012-09	Gibraltar	Gibraltar		
2012-09	Germany			
2009-10	Liberia	Monrovia		
2009-10	Germany			

Construction Overview

ShipType	Vehicles Carrier	Built	2009
GT	47,020	Deadweight	11,454

Alterations & Conversion

Arrangement

Construction Detail

Ship Type Group:PCC/PCTC => 4,000 cars; Statcode5:A35B2RV; Hull Type:Double Bottom Entire Compartment Length; Hull Material:Steel; Hull Connections:Welded; Decks:12 dks, incl 3 hoistable dks; Bulbous bow;

Recycling Detail (Broken up ships only)

Service Constraints

Shipbuilder

2009-10 [Yangfan Group Co Ltd - Zhoushan ZJ](#) Yard/hull No.: 2073

Sister Ships

At most, the first fifty sister ships are returned. Click [here](#) to return all sister ships into Search Results.

LRNO	Ship Name	Status	Deadweight	GT	Built	Type	Yard No	Main Engine
<a href="#">9427926</a>	PAGANELLA	IN SERVICE/COMMISSION	11454	47020	2009-10	Vehicles Carrier	2073	9S50MC-C
<a href="#">9427940</a>	PAGLIA	IN SERVICE/COMMISSION	11369	47057	2010-10	Vehicles Carrier	2075	9S50MC-C
<a href="#">9427952</a>	PAGNA	IN SERVICE/COMMISSION	11315	47057	2010-11	Vehicles Carrier	2076	9S50MC-C
<a href="#">9427964</a>	PARANA	IN SERVICE/COMMISSION	12868	47053	2012-05	Vehicles Carrier	2085	9S50MC-C
<a href="#">9491874</a>	PASSAMA	IN SERVICE/COMMISSION	12806	47053	2012-05	Vehicles Carrier	2086	9S50MC-C
<a href="#">9491886</a>	PASSERO	IN SERVICE/COMMISSION	12755	47053	2012-09	Vehicles Carrier	2087	9S50MC-C
<a href="#">9491898</a>	PATARA	IN SERVICE/COMMISSION	12755	47053	2012-10	Vehicles Carrier	2088	9S50MC-C
<a href="#">9427938</a>	SIEM PLATO	IN SERVICE/COMMISSION	11373	47020	2009-11	Vehicles Carrier	2074	9S50MC-C

Status History

Date	Status
2009-10-13	In Service/Commission
2009-04-28	Launched
2008-09-11	Keel Laid
2007-01-01	On Order/Not Commenced

Supplementary Features

Feature

BWMP	
IWS	
Boiler Manufacturer	Saacke Marine Systems
Total fuel capacity, in cubic metres	891.00

Dimensions

Length Overall	182.970	Length (BP)	170.200
Length (Reg)	175.210	Bulbous Bow	Yes
Breadth Extreme	31.810	Breadth Moulded	31.500
Draught	8.750	Depth	31.800
Keel To Mast Height	0.000		
Displacement	26041	T/CM	50.0

Tonnages

Tonnage Type	One tonnage, unspecified	Tonnage System	New System (International 1969)
Effective Date	2009-10		
Gross Tonnage (GT)	47,020	Net Tonnage (NT)	14,106
Deadweight (DWT)	11,454	Compensated Gross Tonnage (CGT)	0
Formula Deadweight	75,271	Light Displacement Tonnage (LDT)	14,587

Cargo Overview

Grain	0	Bale	0	Liquid	0	Gas	0
TEU	0	TEU 14t	0	Insulated	0	Passengers	0
Bollard Pull (t)	0						

Capacities

Segregated Ballast 5,366; Cars 4,900
--------------------------------------

Cargo Handling Gear

Compartments

Hatches

Ro-Ro (Lanes, Ramps & Doors)

Lanes: 0m x 0.00m x 5.20m (LxWxH)
Ramps: 1 Starboard 20.00x4.70x10(LxWxSWL), 1 Starboard Aft 32.50x7.50x120(LxWxSWL)

Specialist

Tanks

Machinery Overview

1 oil engine driving 1 FP propeller at 127 rpm Total Power: Mcr 14,220kW (19,334hp)Service Speed: 21.00kts

Auxiliary Engines

Design: Hyundai Himsen, Engine Builder: Hyundai Himsen 1 x 5H21/32, 4 Stroke 5Cy. 210 x 320, Mcr: 800 kW Design: Hyundai Himsen, Engine Builder: Hyundai Himsen 2 x 7H21/32, 4 Stroke 7Cy. 210 x 320, Mcr: 1100 kW

Auxiliary Generators

2 x 1,053kW 450V a.c., 1 x 752kW 450V a.c.

Boilers

Bunkers

Fuel: distillate fuel: 138 cu m, residual fuel: 753 cu m

Prime Mover Detail

Design: MAN-B&W (Group: MAN-B&W), Engine Builder: Hyundai Heavy Industries Co Ltd - South Korea 1 x 9S50MC-C, 2 Stroke, Single Acting, In-Line (Vertical) 9 Cy. 500 x 2000, Mcr: 14,220 kW (19,334 hp) at 127 rpm

Thrusters

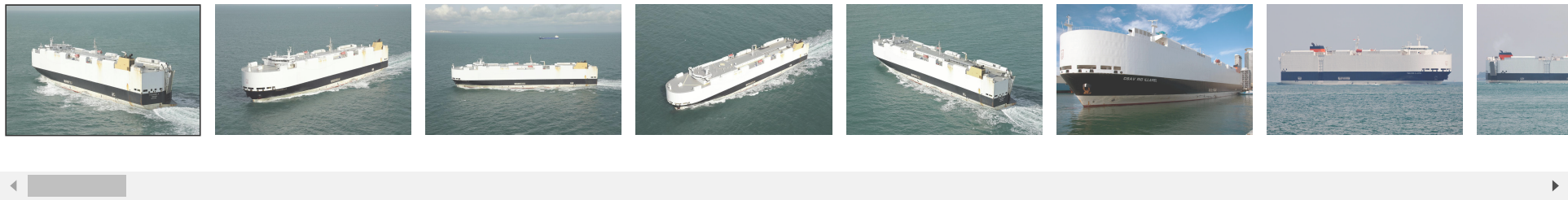
1 Tunnel thruster (f) 1,100kW(1,496bhp)

Event Timeline

Date	Significant Events
202108	PSC Inspected
202105	PSC Inspected
202104	PSC Inspected
202011	PSC Inspected
202010	PSC Inspected
202008	PSC Inspected
201907	PSC Inspected
201810	PSC Inspected
201805	SMC Certificate issued by DNV GL Expires 20181014
201802	PSC Inspected
201712	SMC Certificate issued by DNV GL Expires 20180613, Owner Janus Shipping SA, Group Owner Jitsugyo S, Flagged by Gibraltar, PSC Inspected
201704	PSC Inspected
201606	Flagged by Germany
201604	PSC Inspected
201508	PSC Inspected
201507	PSC Inspected
201505	PSC Inspected
201411	PSC Inspected
201409	Operator Laeisz Reederei, Name changed to PAGANELLA, PSC Inspected
201406	PSC Inspected
201405	PSC Inspected
201309	PSC Inspected
201305	PSC Inspected
201304	PSC Inspected
201302	SMC Certificate issued by Gibraltar Expires 20180216, SMC Certificate issued by Gibraltar Expires 20180216, SMC Certificate issued by Germanischer Lloyd Expires 20130716
201210	PSC Inspected
201209	SMC Certificate issued by Germanischer Lloyd Expires 20130304, SMC Certificate issued by Germanischer Lloyd Expires 20130304, Flagged by Gibraltar, Flagged by Germany
201208	SMC Certificate issued by Germanischer Lloyd Expires 20150330
201205	PSC Inspected
201204	PSC Inspected
201203	PSC Inspected
201201	PSC Inspected
201105	PSC Inspected
201104	PSC Inspected
201012	PSC Inspected
201007	PSC Inspected
201005	PSC Inspected
201004	PSC Inspected, PSC Inspected
201003	SMC Certificate issued by Germanischer Lloyd Expires 20150330
200910	Status changed to In Service/Commission, Operator CSAV, Technical Manager Laeisz Reederei, Owner Paganella GmbH and Co KG, Ship Manager Laeisz Reederei, Name changed to CSAV Rio Illapel, Classed NV, Flagged by Liberia, Flagged by Germany
200908	Group Owner Laeisz F Schiffahrts mbH and Co
200904	Status changed to Launched
200809	Status changed to Keel Laid
200701	Status changed to On Order/Not Commenced, Contemplated GL



Photographs



© 2021 IHS Global Limited. IHS Global Limited assumes no responsibility and shall not be liable to any person for any loss, damage or expense caused by reliance on the information or advice in this document or howsoever provided, unless that person has a contract with IHS Global Limited and in that case any responsibility or liability is exclusively on the terms and conditions set out in that contract.