

: THIS REPORT CREATED 6 May 2022 07:55

Ship Detail

Ship Name	PACIFIC FORTITUDE	Shiptype	General Cargo Ship
IMO/LR No.	9381392	Gross	9,611
Call Sign	D5BC4	Deadweight	12,740
MMSI No.	636021430	Year of Build	2007
Flag	Liberia	Status	In Service/Commission
Operator	<a href="#">Auerbach Marine GmbH &amp; Co KG</a>	Shipbuilder	<a href="#">Jiangxi Jiangzhou Union SB</a>



Ownership

Group Owner	<a href="#">Norwegian Marine Services AS</a>	Address Location	Norway	Company No.	6239233
Shipmanager	<a href="#">Auerbach Marine GmbH &amp; Co KG</a>	Address Location	Germany	Company No.	5780086
Operator	<a href="#">Auerbach Marine GmbH &amp; Co KG</a>	Address Location	Germany	Company No.	5780086
DOC Company	<a href="#">Auerbach Marine GmbH &amp; Co KG</a>	Address Location	Germany	IMO Company No (DOC)	5780086
Registered Owner	<a href="#">Nordic MPP Shipowning I AS</a>	Address Location	Norway	IMO Registered Owner No	6269949
Technical Manager	<a href="#">Auerbach Marine GmbH &amp; Co KG</a>	Address Location	Germany	Company No.	5780086
Bareboat Owner	Not Applicable	Address Location		Company No.	9984588

Ownership History

☒ Show extended history

Date	Name	Flag	Group Owner	Shipmanager	Operator	DOC Company	Registered Owner	Price	Seq
2022-02							<a href="#">Nordic MPP Shipowning I AS</a>		00
2022-02			<a href="#">Norwegian Marine Services AS</a>						00
2022-02		Liberia							00
2022-02	PACIFIC FORTITUDE								00
2022-02		Germany							91
2020-02	Liv Auerbach								91
2019-06							<a href="#">Auerbach Schiff 8 UG</a>		91
2017-11			<a href="#">Auerbach Schifffahrt GmbH</a>						93
2017-06								\$4,500,000	00
2017-06						<a href="#">Auerbach Marine GmbH &amp; Co KG</a>			00
2017-06				<a href="#">Auerbach Marine GmbH &amp; Co KG</a>					00
2017-06					<a href="#">Auerbach Marine GmbH &amp; Co KG</a>				00
2017-06							<a href="#">4 Maple Schifffahrt GmbH</a>		92
2017-06	Maple Liv								92
2013-07							<a href="#">HHL Volga GmbH &amp; Co KG</a>		93

2011-11		Liberia						92
2011-11		Germany						93
2011-11	HHL Volga							93
2011-11							<a href="#">Hansa Heavy Lift GmbH</a>	94
2011-11			<a href="#">Hansa Heavy Lift GmbH</a>					94
2011-07	Volga							94
2011-06						<a href="#">Hansa Heavy Lift GmbH</a>		93
2011-06				<a href="#">Hansa Heavy Lift GmbH</a>				94
2011-06					<a href="#">Hansa Heavy Lift GmbH</a>			94
2011-03			Unknown					95
2008-06						<a href="#">Beluga Fleet Management GmbH</a>		94
2008-02						Unknown		95
2007-12		Antigua & Barbuda						94
2007-12							<a href="#">Beluga Chartering GmbH</a>	95
2007-12				<a href="#">Beluga Fleet Management GmbH</a>				95
2007-12					<a href="#">Beluga Shipping GmbH</a>			95
2007-12		Germany						95
2007-12	Beluga Family							95

Originally Beluga Family;Newbuilding price \$29,000,000

Registration, P&I, and Communications

DOC Emails	<a href="mailto:management@aship.de">management@aship.de</a> , <a href="mailto:safety@aship.de">safety@aship.de</a> , <a href="mailto:info@aship.de">info@aship.de</a>	Flag	Liberia
Port of Registry	Monrovia	Sat Com ID	
Official Number	21430	Fishing Number	
Sat Com Ans Back			
Current P&I Club	Skuld		

P&I Club History

Date	P&I Club
2014-12-03	Skuld
2012-01-26	Skuld
2011-12-20	Gard
2008-07-03	Skuld

Flag, Call Sign & MMSI History

Date	Flag	Port of Registry	Call Sign	MMSI
2022-02	Liberia	Monrovia	D5BC4	636021430
2022-02	Germany	Hamburg	DGAL2	
2011-11	Liberia	Monrovia	D5BC4	636092366
2011-11	Germany			
2007-12	Antigua & Barbuda	Saint John's		
2007-12	Germany			

Construction Overview

ShipType	General Cargo Ship	Built	2007
GT	9,611	Deadweight	12,740

Alterations & Conversion

Arrangement

Structure	Sequence (Bow to Stern)	Position	Type	Material	Length	Breadth
Compartment	01	Centre Or Only	Tween Deck	Steel (Unspecified)	18.75	
Compartment	02	Centre Or Only	Tween Deck	Steel (Unspecified)	42.00	
Compartment	03	Centre Or Only	Tween Deck	Steel (Unspecified)	25.50	
Compartment	04	Centre Or Only	Dry Cargo Hold	Steel (Unspecified)	18.75	
Compartment	05	Centre Or Only	Dry Cargo Hold	Steel (Unspecified)	42.00	
Compartment	06	Centre Or Only	Dry Cargo Hold	Steel (Unspecified)	25.50	
Hatch	01	Centre Or Only	Normal Hatch	N/A	19.30	15.42
Hatch	02	Centre Or Only	Normal Hatch	N/A	42.33	17.98
Hatch	03	Centre Or Only	Normal Hatch	N/A	26.00	18.00
Hatch	04	Unknown	Engine Room	N/A		

Construction Detail

Ship Type Group:General Cargo 10,000-14,999dwt; Statcode5:A31A2GX; Standard design:Volharding12500; Hull Type:Double Bottom Entire  
Compartment Length; Hull Material:Steel; Strengthened for heavy cargoes; Hull Connections:Welded; Decks:1 dk; Bulbous bow; FS Ice Class 1A

Recycling Detail (Broken up ships only)

Service Constraints

Trading, Commercial; Sea, Unspecified

Shipbuilder

2007-12 [Jiangxi Jiangzhou Union ShipbuildingCo Ltd - Ruichang JX](#) Yard/hull No.: JZ1003

Sister Ships

At most, the first fifty sister ships are returned. Click [here](#) to return all sister ships into Search Results.

LRNO	Ship Name	Status	Deadweight	GT	Built	Type	Yard No	Main Engine
<a href="#">9283954</a>	ABB BENTJE	IN SERVICE/COMMISSION	12786	9611	2004-04	General Cargo Ship	12000-1	6M43
<a href="#">9283966</a>	ABB ELKE	IN SERVICE/COMMISSION	12672	9611	2004-11	General Cargo Ship	12000-4	6M43
<a href="#">9437309</a>	ABB VANESSA	IN SERVICE/COMMISSION	12628	9611	2009-08	General Cargo Ship	20060309	6M43C
<a href="#">9468085</a>	ALANIS	IN SERVICE/COMMISSION	12744	9611	2010-04	General Cargo Ship	JZ1017	6M43C
<a href="#">9349291</a>	ANASTASIIA	IN SERVICE/COMMISSION	12731	9611	2006-10	General Cargo Ship	20040304	6M43
<a href="#">9468097</a>	ANNIE	IN SERVICE/COMMISSION	12654	9611	2010-07	General Cargo Ship	JZ1018	6M43C
<a href="#">9468102</a>	BBC ALBERTA	IN SERVICE/COMMISSION	12655	9611	2010-11	General Cargo Ship	JZ1019	6M43C
<a href="#">9501253</a>	BBC ARIZONA	IN SERVICE/COMMISSION	12747	9618	2010-04	General Cargo Ship	12000-16	6M43C
<a href="#">9291963</a>	BBC CAMPANA	IN SERVICE/COMMISSION	12837	9618	2004-08	General Cargo Ship	12000BC-1	6M43
<a href="#">9402043</a>	BBC CAROLINA	IN SERVICE/COMMISSION	12705	9611	2007-09	General Cargo Ship	12000-7	6M43C
<a href="#">9357212</a>	BBC DELAWARE	IN SERVICE/COMMISSION	12859	9625	2007-11	General Cargo Ship	SF81	6M43
<a href="#">9357224</a>	BBC GEORGIA	IN SERVICE/COMMISSION	12797	9625	2008-05	General Cargo Ship	SF82	6M43
<a href="#">9465394</a>	BBC ILLINOIS	IN SERVICE/COMMISSION	12667	9627	2011-02	General Cargo Ship	SF070106	6M43C
<a href="#">9357200</a>	BBC MAINE	IN SERVICE/COMMISSION	12792	9625	2007-09	General Cargo Ship	SF80	6M43
<a href="#">9433298</a>	BBC MARYLAND	IN SERVICE/COMMISSION	12720	9627	2010-07	General Cargo Ship	SF87	6M43C
<a href="#">9501241</a>	BBC MICHIGAN	IN SERVICE/COMMISSION	12768	9618	2010-03	General Cargo Ship	12000-15	6M43C
<a href="#">9260378</a>	BBC MINNESOTA	IN SERVICE/COMMISSION	12840	9611	2004-02	General Cargo Ship	A458	6M43
<a href="#">9501265</a>	BBC OREGON	IN SERVICE/COMMISSION	12660	9618	2010-08	General Cargo Ship	12000-17	6M43C
<a href="#">9291975</a>	BBC PLATA	IN SERVICE/COMMISSION	12837	9618	2005-02	General Cargo Ship	12000BC-3	6M43
<a href="#">9337224</a>	BBC ROSARIO	IN SERVICE/COMMISSION	12873	9620	2007-01	General Cargo Ship	SF78	6M43
<a href="#">9435026</a>	BBC TENNESSEE	IN SERVICE/COMMISSION	12668	9611	2008-06	General Cargo Ship	JZ1004	6M43C

<a href="#">9388883</a>	BBC TEXAS	IN SERVICE/COMMISSION	12669	9611	2007-10	General Cargo Ship	20040307	6M43
<a href="#">9468114</a>	BBC UTAH	IN SERVICE/COMMISSION	12575	9611	2011-05	General Cargo Ship	JZ1020	6M43C
<a href="#">9357236</a>	BBC VERMONT	IN SERVICE/COMMISSION	12863	9625	2008-06	General Cargo Ship	SF83	6M43
<a href="#">9501277</a>	BBC VIRGINIA	IN SERVICE/COMMISSION	12657	9618	2010-12	General Cargo Ship	12000-18	6M43C
<a href="#">9337236</a>	BBC ZARATE	IN SERVICE/COMMISSION	12834	9620	2007-06	General Cargo Ship	SF79	6M43
<a href="#">9488047</a>	BILLESBORG	IN SERVICE/COMMISSION	12696	9627	2011-05	General Cargo Ship	SF070108	6M43C
<a href="#">9488035</a>	BRATTINGSBORG	IN SERVICE/COMMISSION	12767	9627	2010-11	General Cargo Ship	SF070107	6M43C
<a href="#">9402055</a>	CALIFORNIA	IN SERVICE/COMMISSION	12672	9611	2008-02	General Cargo Ship	12000-8	6M43C
<a href="#">9488059</a>	CLAUDE A. DESGAGNES	IN SERVICE/COMMISSION	12671	9627	2011-07	General Cargo Ship	SF070109	6M43C
<a href="#">9453793</a>	COE LENI	IN SERVICE/COMMISSION	12696	9627	2010-09	General Cargo Ship	SF070105	6M43C
<a href="#">9626716</a>	CONSTANTINE	IN SERVICE/COMMISSION	12503	9627	2012-04	General Cargo Ship	SF100101	6M43C
<a href="#">9261061</a>	CORDILLERA	IN SERVICE/COMMISSION	12798	9611	2004-07	General Cargo Ship	A459	6M43
<a href="#">9358058</a>	DIANA	IN SERVICE/COMMISSION	12791	9611	2007-04	General Cargo Ship	JU002	6M43
<a href="#">9488061</a>	ELLENSBORG	IN SERVICE/COMMISSION	12731	9627	2011-10	General Cargo Ship	SF070110	6M43C
<a href="#">9435105</a>	ERIK	IN SERVICE/COMMISSION	12763	9618	2008-06	General Cargo Ship	12000-10	6M43C
<a href="#">9402031</a>	FESCO OLGA	IN SERVICE/COMMISSION	12744	9614	2007-06	General Cargo Ship	12000-6	6M43C
<a href="#">9261073</a>	FESCO PARIS	IN SERVICE/COMMISSION	12828	9611	2004-12	General Cargo Ship	A460	6M43
<a href="#">9312157</a>	FESCO ULISS	IN SERVICE/COMMISSION	12711	9615	2004-09	General Cargo Ship	20020306	6M43
<a href="#">9435117</a>	FRIEDA	IN SERVICE/COMMISSION	12742	9618	2008-09	General Cargo Ship	12000-11	6M43C
<a href="#">9402067</a>	GWEN	IN SERVICE/COMMISSION	12692	9611	2008-08	General Cargo Ship	20060301	6M43C
<a href="#">9443669</a>	HEEMSKERKGRACHT	IN SERVICE/COMMISSION	12678	9611	2009-08	General Cargo Ship	12000-13	6M43C
<a href="#">9435753</a>	HEERENGRACHT	IN SERVICE/COMMISSION	12678	9611	2009-01	General Cargo Ship	JZ1005	6M43C
<a href="#">9435765</a>	HOUTMANGRACHT	IN SERVICE/COMMISSION	12669	9611	2009-08	General Cargo Ship	JZ1006	6M43C
<a href="#">9433262</a>	HUDSONGRACHT	IN SERVICE/COMMISSION	12709	9627	2008-12	General Cargo Ship	SF84	6M43C
<a href="#">9433274</a>	HUMBERGRACHT	IN SERVICE/COMMISSION	12771	9627	2009-04	General Cargo Ship	SF85	6M43C
<a href="#">9437311</a>	JANIS	IN SERVICE/COMMISSION	12608	9611	2009-11	General Cargo Ship	20060310	6M43C
<a href="#">9435129</a>	JANNES	IN SERVICE/COMMISSION	12708	9618	2009-01	General Cargo Ship	12000-12	6M43C
<a href="#">9467005</a>	JOSEF	IN SERVICE/COMMISSION	12546	9616	2011-05	General Cargo Ship	12000-19	6M43C
<a href="#">9646455</a>	KHERRATA	IN SERVICE/COMMISSION	12645	9627	2012-06	General Cargo Ship	SF100102	6M43C

Status History

Date	Status
2018-08-09	In Service/Commission
2018-07-15	In Casualty Or Repairing
2007-12-20	In Service/Commission
2007-08-20	Launched
2007-02-12	Keel Laid
2006-11-01	On Order/Not Commenced
2006-01-13	Projected

Supplementary Features

Feature

Heavy load

Fitted for ref containers

Fitted for containers

BWMP(E)

Tweendeck-portable

CO2 fitted in holds

Str heavy cargoes

IWS

FS Ice Class 1A

Fuel Consumption Speed - Current Value	15.50
Total fuel capacity, in cubic metres	1028.00

Energy Efficiency Design Index Number	30.00
Total Fuel Consumption - Current Value	25.00
Propeller Manufacturer	Wartsila
Boiler Manufacturer	Alfa Laval Aalborg

Dimensions

Length Overall	138.120	Length (BP)	130.000
Length (Reg)	0.000	Bulbous Bow	Yes
Breadth Extreme	0.000	Breadth Moulded	21.000
Draught	8.000	Depth	11.000
Keel To Mast Height	39.400		
Displacement	17972	T/CM	25.5

Tonnages

Tonnage Type	One tonnage, unspecified	Tonnage System	New System (International 1969)
Effective Date	2007-12		
Gross Tonnage (GT)	9,611	Net Tonnage (NT)	4,260
Deadweight (DWT)	12,740	Compensated Gross Tonnage (CGT)	0
Formula Deadweight	13,258	Light Displacement Tonnage (LDT)	5,232

Cargo Overview

Grain	15,952	Bale	14,856	Liquid	0	Gas	0
TEU	665	TEU 14t	542	Insulated	0	Passengers	0
Bollard Pull (t)	0						

Capacities

Grain 15,952; Bale 14,856; Segregated Ballast 5,001; TEU: 665 TEU @14:542 C Ho 334 TEU C Dk 331 TEU incl 25 ref C

Cargo Handling Gear

2 Cranes of 150 tonnes SWL

Compartments

1 18.75m long Steel (Unspecified) Centre Or Only Dry Cargo Hold(s),1 25.50m long Steel (Unspecified) Centre Or Only Dry Cargo Hold(s),1 42.00m long Steel (Unspecified) Centre Or Only Dry Cargo Hold(s),1 18.75m long Steel (Unspecified) Centre Or Only Tween Deck(s),1 25.50m long Steel (Unspecified) Centre Or Only Tween Deck(s),1 42.00m long Steel (Unspecified) Centre Or Only Tween Deck(s)

Hatches

1 Centre Or Only Normal Hatch 19.30m long by 15.42m breadth, 1 Centre Or Only Normal Hatch 26.00m long by 18.00m breadth, 1 Centre Or Only Normal Hatch 42.33m long by 17.98m breadth, 1 Unknown Engine Room

Ro-Ro (Lanes, Ramps & Doors)

Specialist

Tanks

Machinery Overview

1 oil engine reduction geared to screw shaft driving 1 CP propeller at 132 rpm Total Power: Mcr 5,400kW (7,342hp), Csr 4,590kW (6,241hp)Max. Speed: 15.00kts, Service Speed: 14.00kts Speed & Consumption: 15.50 knots on 25.00 tonnes per day

Auxiliary Engines

Design: Man, Engine Builder: Man 3 x D2840LE, 4 Stroke 10Cy. 128 x 142, Mcr: 450 kW

Auxiliary Generators

3 x 395kW a.c., 1 x 700kW a.c. main engine driven

Boilers

Bunkers

Fuel: distillate fuel: 128 cu m, residual fuel: 900 cu m

Speed (kn)	At Consumption (t)
15.50	25.00



Prime Mover Detail

Design: MaK (Group: Caterpillar), Engine Builder: Caterpillar Motoren GmbH & Co. KG - Germany 1 x 6M43C, 4 Stroke, Single Acting, In-Line (Vertical) 6 Cy. 430 x 610, Mcr: 5,400 kW (7,342 hp) at 514 rpm

Thrusters

1 Thwart. FP thruster (f) 500kW(680bhp)

Event Timeline

Date	Significant Events
202202	Name changed to PACIFIC FORTITUDE, Flagged by Liberia, Flagged by Germany, SMC Certificate issued by DNV Expires 20221029, Owner Nordic MPP Shipowning I AS, Group Owner Norwegian Marine Services AS
202109	PSC Inspected
202007	PSC Inspected
202005	PSC Inspected
202002	Name changed to Liv Auerbach, PSC Inspected, SMC Certificate issued by DNV GL Expires 20221029
201907	PSC Inspected
201906	Owner Auerbach Schiff 8 UG
201904	PSC Inspected
201902	PSC Inspected
201810	PSC Inspected
201808	Status changed to In Service/Commission
201807	Status changed to In Casualty Or Repairing, In Casualty
201806	PSC Inspected, PSC Inspected
201803	PSC Inspected
201802	PSC Inspected
201801	PSC Inspected
201711	Group Owner Auerbach Schifffahrt GmbH
201710	PSC Inspected, SMC Certificate issued by DNV-GL Expires 20221029
201707	PSC Inspected
201706	Ship Manager Auerbach Marine GmbH and Co KG, Name changed to Maple Liv, SMC Certificate issued by DNV GL Expires 20171202, Operator Auerbach Marine GmbH and Co KG, Technical Manager Auerbach Marine GmbH and Co KG, Owner 4 Maple Schifffahrt GmbH
201704	PSC Inspected
201611	PSC Inspected
201610	PSC Inspected
201603	PSC Inspected
201601	PSC Inspected
201510	PSC Inspected
201509	PSC Inspected
201506	PSC Inspected
201505	PSC Inspected
201402	PSC Inspected
201312	PSC Inspected
201310	PSC Inspected
201308	PSC Inspected
201307	Owner HHL Volga GmbH and Co KG
201212	PSC Inspected
201206	PSC Inspected, SMC Certificate issued by Germanischer Lloyd Expires 20170629, SMC Certificate issued by Germanischer Lloyd Expires 20121129, SMC Certificate issued by Germanischer Lloyd Expires 20120826
201203	PSC Inspected, PSC Inspected, PSC Inspected
201111	Name changed to HHL Volga, Flagged by Liberia, Flagged by Germany, SMC Certificate issued by Germanischer Lloyd Expires 20120826, SMC Certificate issued by Germanischer Lloyd Expires 20120526, SMC Certificate issued by Germanischer Lloyd Expires 20111225, Owner Hansa Heavy Lift GmbH, Group Owner Hansa Heavy Lift GmbH
201109	PSC Inspected

201108	PSC Inspected
201107	Name changed to Volga
201106	Ship Manager Hansa Heavy Lift GmbH, SMC Certificate issued by Germanischer Lloyd Expires 20111225, Operator Hansa Heavy Lift GmbH, Technical Manager Hansa Heavy Lift GmbH
201011	PSC Inspected
201008	PSC Inspected
201007	PSC Inspected
201001	PSC Inspected
200909	PSC Inspected, SMC Certificate issued by Germanischer Lloyd Expires 20130720
200907	PSC Inspected
200904	PSC Inspected
200809	PSC Inspected
200807	SMC Certificate issued by Germanischer Lloyd Expires 20130720, SMC Certificate issued by Germanischer Lloyd Expires 20081220
200806	PSC Detained, SMC Certificate issued by Germanischer Lloyd, Technical Manager Beluga Fleet Management GmbH
200803	PSC Inspected
200712	Ship Manager Beluga Fleet Management GmbH, Name changed to Beluga Family, Classed NV, Flagged by Antigua and Barbuda, Flagged by Germany, Status changed to In Service/Commission, Operator Beluga Shipping GmbH, Technical Manager Unknown, Owner Beluga Chartering GmbH
200708	Status changed to Launched
200702	Status changed to Keel Laid
200611	Status changed to On Order/Not Commenced
200601	Contemplated GL, Status changed to Projected

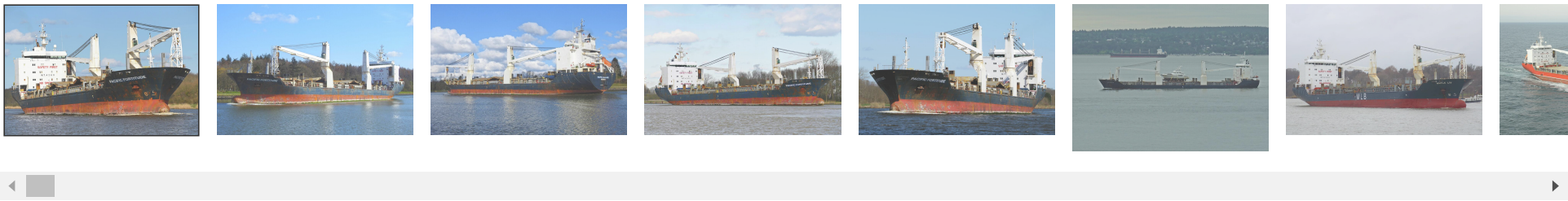
Photographs



Photo 1 of 2206

PACIFIC FORTITUDE  
Photo Date: 2022-04-03  
Copyright: hasenpusch-  
photo@t-online.de





My Notes

Add Note

Inmarsat



To view information available on the Inmarsat Ships Directory for this vessel, click on the button below.

Inmarsat

This link is by ship name, so please ensure that you are viewing the correct ship in the Directory. If you cannot see the ship you can search again directly in the Directory. Please note that the Directory displays each Inmarsat terminal separately for each ship.

Equasis



To view information available on Equasis for this vessel click on the button below.

Equasis

Equasis is a public web-site promoting quality shipping, and this access from Sea-web has the approval of the Equasis Secretariat.

Ship Performance



This data is brought to you in cooperation with [Marine Benchmark](#)

Vessel operation analysis - Demo

The data below is for demo purposes only. To view real data you will need to add the [Ship Performance Module](#) to your subscription

Aggregation	Unit	Sep	Oct	Nov	Dec	Jan	Feb
Time moving of total, vessel (Segment)	%	XX.X (XX.X)	XX.X (XX.X)	XX.X (XX.X)	XX.X (XX.X)	XX.X (XX.X)	XX.X (XX.X)
Distance made, vessel (Segment)	nm	X,XXX (X,XXX)	X,XXX (X,XXX)	X,XXX (X,XXX)	X,XXX (X,XXX)	X,XXX (X,XXX)	X,XXX (X,XXX)
Avg speed steaming, vessel (Segment)	kn	XX.X (XX.X)	XX.X (XX.X)	XX.X (XX.X)	XX.X (XX.X)	XX.X (XX.X)	XX.X (XX.X)
Time still of total, vessel (Segment)	%	XX.X (XX.X)	XX.X (XX.X)	XX.X (XX.X)	XX.X (XX.X)	XX.X (XX.X)	XX.X (XX.X)
Time in SECA of total	%	XX.X	XX.X	XX.X	XX.X	XX.X	XX.X
Time moving in SECA of total	%	XX.X	XX.X	XX.X	XX.X	XX.X	XX.X
Distance made in SECA	nm	X,XXX	X,XXX	X,XXX	X,XXX	X,XXX	X,XXX
Average speed steaming in SECA	kn	XX.X	XX.X	XX.X	XX.X	XX.X	XX.X

**i** Demo data shows how the data are formatted in the full product. For oldest period sharp data is shown. Please contact IHS Maritime for any question or subscriptions. Time moving/still is identified as time in speed over/under 1 kn. Average speed is calculated for time in speed over 6 kn. Time moving in SECA area is percent of total time in full month and not percent of time in SECA. For more detailed, longer analysis or SECA area analysis please contact Marine Benchmark.

Vessel trading area analysis - Demo

The data below is for demo purposes only. To view real data you will need to add the [Ship Performance Module](#) to your subscription

Trading area	Unit	Sep	Oct	Nov	Dec	Jan	Feb
Time in area, North/West Europe (Segment)	%	XX.X (XX.X)	XX.X (XX.X)	XX.X (XX.X)	XX.X (XX.X)	XX.X (XX.X)	XX.X (XX.X)
Time in area, North Med and Black Sea (Segment)	%	XX.X (XX.X)	XX.X (XX.X)	XX.X (XX.X)	XX.X (XX.X)	XX.X (XX.X)	XX.X (XX.X)
Time in area, South Med (Segment)	%	XX.X (XX.X)	XX.X (XX.X)	XX.X (XX.X)	XX.X (XX.X)	XX.X (XX.X)	XX.X (XX.X)
Time in area, Middle East / India (Segment)	%	XX.X (XX.X)	XX.X (XX.X)	XX.X (XX.X)	XX.X (XX.X)	XX.X (XX.X)	XX.X (XX.X)



Time in area, North East Asia and Russia (Segment)	%	XX.X (XX.X)	XX.X (XX.X)	XX.X (XX.X)	XX.X (XX.X)	XX.X (XX.X)	XX.X (XX.X)
Time in area, South East Asia (Segment)	%	XX.X (XX.X)	XX.X (XX.X)	XX.X (XX.X)	XX.X (XX.X)	XX.X (XX.X)	XX.X (XX.X)
Time in area, Oceania incl. Australia (Segment)	%	XX.X (XX.X)	XX.X (XX.X)	XX.X (XX.X)	XX.X (XX.X)	XX.X (XX.X)	XX.X (XX.X)

**i** Demo data shows how the data are formatted in the full product. For oldest period sharp data is shown. Please contact IHS Maritime for any question or subscriptions. Time in area is defined as all time still or moving. The globe is divided into 9 highly aggregated trading areas (for area definitions, please see the help file under help tab or in a link at the top of this section). For more detailed geographical analysis, first down to 18 well defined and market based trading areas, containing US gulf, Sain Lawrence seaways etc. Or any custom defined area on the globe please contact Marine Benchmark.

© 2022 IHS Global Limited. IHS Global Limited assumes no responsibility and shall not be liable to any person for any loss, damage or expense caused by reliance on the information or advice in this document or howsoever provided, unless that person has a contract with IHS Global Limited and in that case any responsibility or liability is exclusively on the terms and conditions set out in that contract.