

: THIS REPORT CREATED 29 Nov 2022 06:47

Ship Detail

Ship Name	SYFNOS	Shiptype	Crude Oil Tanker
IMO/LR No.	9326067	Gross	156,933
Call Sign	D5RS4	Deadweight	298,495
MMSI No.	636018859	Year of Build	2006
Flag	Liberia	Status	In Service/Commission
Operator	Andros Maritime Agencies Ltd	Shipbuilder	Universal Shbldg - Ariake



Ownership

Group Owner	Aeolos Management SA	Address Location	Greece	Company No.	0517435
Shipmanager	Aeolos Management SA	Address Location	Greece	Company No.	0517435
Operator	Andros Maritime Agencies Ltd	Address Location	United Kingdom	Company No.	0535578
DOC Company	Aeolos Management SA	Address Location	Greece	IMO Company No (DOC)	0517435
Registered Owner	Sifnos Maritime Co	Address Location	Liberia	IMO Registered Owner No	6058035
Technical Manager	Aeolos Management SA	Address Location	Greece	Company No.	0517435
Bareboat Owner		Address Location		Company No.	

Ownership History

☒ Show extended history

Date	Name	Flag	Group Owner	Shipmanager	Operator	DOC Company	Registered Owner	Price	Seq
2018-09						Aeolos Management SA			00
2018-09							Sifnos Maritime Co		00
2018-09				Aeolos Management SA					00
2018-09					Andros Maritime Agencies Ltd				00
2018-09			Aeolos Management SA						00
2018-09		Liberia							00
2018-09	SYFNOS								00
2018-08								\$33,000,000	00
2008-02							Prisma ENE		94
2006-06						Nereus Shipping SA			95
2006-06							Wavecrest Investment Co SA		95
2006-06				Nereus Shipping SA					95
2006-06					Nereus Shipping SA				95
2006-06		Greece							95
2006-06	Gloric								95
2006-00			C M Lemos & Co Ltd						95

Originally Gloric

Registration, P&I, and Communications

DOC Emails mail@aeolosgr.com

Port of Registry	Monrovia	Flag	Liberia
Official Number	18859	Sat Com ID	
Sat Com Ans Back		Fishing Number	
Current P&I Club	Gard		

P&I Club History

Date	P&I Club
2018-09-20	Gard
2006-10-11	London P&I Club

Flag, Call Sign & MMSI History

Date	Flag	Port of Registry	Call Sign	MMSI
2018-09	Liberia	Monrovia	D5RS4	636018859
2006-06	Greece	Piraeus	SZMG	240539000

Crew List

Construction Overview

ShipType	Crude Oil Tanker	Built	2006
GT	156,933	Deadweight	298,495

Alterations & Conversion

Arrangement

Structure	Sequence (Bow to Stern)	Position	Type	Material	Length	Breadth
Tank	01	Cargo Tank	Port	Steel (Unspecified)		
Tank	02	Cargo Tank	Centre Or Only	Steel (Unspecified)		
Tank	03	Cargo Tank	Starboard	Steel (Unspecified)		
Tank	04	Cargo Tank	Port	Steel (Unspecified)		
Tank	05	Cargo Tank	Centre Or Only	Steel (Unspecified)		
Tank	06	Cargo Tank	Starboard	Steel (Unspecified)		
Tank	07	Cargo Tank	Port	Steel (Unspecified)		
Tank	08	Cargo Tank	Centre Or Only	Steel (Unspecified)		
Tank	09	Cargo Tank	Starboard	Steel (Unspecified)		
Tank	10	Cargo Tank	Port	Steel (Unspecified)		
Tank	11	Cargo Tank	Centre Or Only	Steel (Unspecified)		
Tank	12	Cargo Tank	Starboard	Steel (Unspecified)		
Tank	13	Cargo Tank	Port	Steel (Unspecified)		
Tank	14	Cargo Tank	Centre Or Only	Steel (Unspecified)		
Tank	15	Cargo Tank	Starboard	Steel (Unspecified)		
Tank	16	Slop Tank	Port	Steel (Unspecified)		
Tank	17	Slop Tank	Starboard	Steel (Unspecified)		

Construction Detail

Ship Type Group:Tanker-VLCC; Statcode5:A13A2TV; Hull Type:Double Hull (Marpol); Hull Material:Steel; Hull Connections:Welded; Decks:1 dk; Bulbous bow;

Recycling Detail (Broken up ships only)

Service Constraints

Trading, Commercial; Sea, Unspecified

Shipbuilder

2006-06 [Universal Shipbuilding Corp - Nagasu KM \(Ariake Shipyard\)](#) Yard/hull No.: 030

Sister Ships

At most, the first fifty sister ships are returned. Click [here](#) to return all sister ships into Search Results.

LRNO	Ship Name	Status	Deadweight	GT	Built	Type	Yard No	Main Engine
9398072	ACHILLEAS	IN SERVICE/COMMISSION	297863	156915	2010-06	Crude Oil Tanker	094	7S80MC
9377418	ALEXANDER THE GREAT	IN SERVICE/COMMISSION	297958	156915	2010-03	Crude Oil Tanker	093	7S80MC
9248473	ARZOYI	IN CASUALTY OR REPAIRING	299152	156916	2002-03	Crude Oil Tanker	4978	7S80MC
9284946	AUSTRALIS	IN SERVICE/COMMISSION	299095	156914	2003-11	Crude Oil Tanker	5010	7S80MC
9248497	BOREAS	IN SERVICE/COMMISSION	299164	156916	2002-09	Crude Oil Tanker	4980	7S80MC
9292632	BUNGA KASTURI DUA	LAID-UP	300542	157098	2005-02	Crude Oil Tanker	014	7S80MC
9327554	BUNGA KASTURI ENAM	IN SERVICE/COMMISSION	299319	157808	2008-03	Crude Oil Tanker	079	7S80MC
9327114	BUNGA KASTURI LIMA	IN SERVICE/COMMISSION	300246	157808	2007-09	Crude Oil Tanker	078	7S80MC
9245782	COSGLORY LAKE	IN SERVICE/COMMISSION	299145	156914	2003-01	Crude Oil Tanker	4987	7S80MC
9294587	COSGRACE LAKE	IN SERVICE/COMMISSION	299118	156914	2006-07	Crude Oil Tanker	006	7S80MC
9294575	COSGRAND LAKE	IN SERVICE/COMMISSION	298997	156914	2006-02	Crude Oil Tanker	005	7S80MC
9337183	COSJADE LAKE	IN SERVICE/COMMISSION	298216	156915	2009-01	Crude Oil Tanker	075	7S80MC
9337171	COSPEARL LAKE	IN SERVICE/COMMISSION	298195	156915	2008-01	Crude Oil Tanker	074	7S80MC
9337195	FPMC C HONOR	IN SERVICE/COMMISSION	298078	156987	2008-11	Crude Oil Tanker	080	7S80MC
9406178	FPMC C MELODY	IN SERVICE/COMMISSION	297229	156975	2011-12	Crude Oil Tanker	129	7S80MC
9419955	FPMC C NOBLE	IN SERVICE/COMMISSION	297258	156975	2012-05	Crude Oil Tanker	130	7S80MC
9457531	FPMC C ORIENT	IN SERVICE/COMMISSION	297412	156975	2012-06	Crude Oil Tanker	131	7S80MC
9337133	IVY	IN SERVICE/COMMISSION	300325	157245	2007-04	Crude Oil Tanker	053	7S80MC
9337157	KOKKARI	IN SERVICE/COMMISSION	297538	156902	2008-02	Crude Oil Tanker	063	7S80MC
9395290	MERCURY HOPE	IN SERVICE/COMMISSION	297221	157589	2011-11	Crude Oil Tanker	124	7S80MC
9395496	MERMAID HOPE	IN SERVICE/COMMISSION	297274	157589	2011-12	Crude Oil Tanker	125	7S80MC
9398060	NEW PARADISE	IN SERVICE/COMMISSION	297863	156921	2010-01	Crude Oil Tanker	091	7S80MC
9398058	NEW PROSPECT	IN SERVICE/COMMISSION	297934	156921	2009-04	Crude Oil Tanker	090	7S80MC
9284960	OCEAN LILY	IN SERVICE/COMMISSION	299170	156930	2004-02	Crude Oil Tanker	5011	7S80MC
9302968	PNS SERENA	IN SERVICE/COMMISSION	300398	157245	2006-10	Crude Oil Tanker	042	7S80MC
9375238	SAHAM	IN SERVICE/COMMISSION	299991	156923	2010-10	Crude Oil Tanker	112	7S80MC
9406166	SAIQ	IN SERVICE/COMMISSION	299999	156935	2011-04	Crude Oil Tanker	126	7S80MC
9326067	SYFNOS	IN SERVICE/COMMISSION	298495	156933	2006-06	Crude Oil Tanker	030	7S80MC
9288083	SYMPHONY 3	IN SERVICE/COMMISSION	299031	156973	2004-04	Crude Oil Tanker	011	7S80MC
9273337	TIFANI	IN SERVICE/COMMISSION	299999	156967	2003-04	Crude Oil Tanker	5004	7S80MC
9326055	VERONICA	IN SERVICE/COMMISSION	298522	156933	2006-03	Crude Oil Tanker	029	7S80MC
9288095	WEN YAO	IN SERVICE/COMMISSION	298972	156973	2005-07	Crude Oil Tanker	012	7S80MC

Status History

Date	Status
2006-06-30	In Service/Commission
2006-04-28	Launched
2004-12-04	Keel Laid
2004-01-01	On Order/Not Commenced

Supplementary Features

Feature

Scrubber Fitted	
ESP	
IWS	
Fuel Consumption Speed - Current Value	13.00
Total Fuel Consumption - Current Value	65.00
Total fuel capacity, in cubic metres	8085.00

Boiler Manufacturer

IMEX

Propeller Manufacturer

Nakashima

Cargo Overview

Grain	0	Bale	0	Liquid	324,710	Gas	0
TEU	0	TEU 14t	0	Insulated	0	Passengers	0
Bollard Pull (t)	0						

Capacities

Liquid @ 98% 324,710; Segregated Ballast 98,783; Slops 8,706

Cargo Handling Gear

Cargo Pumps 3 @ 5,500 M3/hr

Compartments

Hatches

Ro-Ro (Lanes, Ramps & Doors)

Specialist

COW, IGS, SBT (Protective), Closed Loading, VRS - Vapour Recovery System, Slop Capacity 8,706, SPM Equipped, 2 Tongue Bow Stoppers, 200t SWL, Flash Point Under 60c, 4 Lines (manifolds) per Side, 46.39m Mid Point Manifold Forward (Light), 84.39m Parallel Body Length (Light), 38.00m Mid Point Manifold Aft (Light), 82.04m Mid Point Manifold Forward (Ballast), 142.61m Parallel Body Length (Ballast), 60.57m Mid Point Manifold Aft (Ballast), 95.65m Mid Point Manifold Forward (Laden), 176.82m Parallel Body Length (Laden), 81.17m Mid Point Manifold Aft (Laden), 162.08m Bow to Centre Manifold, 0.500m Manifold Discharge Diameter

Tanks

5 Steel (Unspecified) Centre Or Only Cargo Tank(s), 5 Steel (Unspecified) Port Cargo Tank(s), 5 Steel (Unspecified) Starboard Cargo Tank(s), 1 Steel (Unspecified) Port Slop Tank(s), 1 Steel (Unspecified) Starboard Slop Tank(s), 3 Grades (cargo segregations)
Cargo Tank(s) partially coated, Slop Tank(s) partially coated

Machinery Overview

1 oil engine driving 1 FP propeller at 79 rpm Total Power: Mcr 25,090kW (34,112hp)Max. Speed: 15.60kts, Service Speed: 13.00kts Speed & Consumption: 13.00 knots on 65.00 tonnes per day

Auxiliary Engines

Design: Daihatsu, Engine Builder: Daihatsu 3 x 8DK-20, 4 Stroke 8Cy. 200 x 300, Mcr: 1000 kW

Auxiliary Generators

3 x 900kW a.c.

Boilers

Bunkers

Fuel: distillate fuel: 510 cu m, residual fuel: 7,575 cu m

Speed (kn)	At Consumption (t)
13.00	65.00

Prime Mover Detail

Design: MAN-B&W (Group: MAN-B&W), Engine Builder: Hitachi Zosen Corp - Japan 1 x 7S80MC, 2 Stroke, Single Acting, In-Line (Vertical) 7 Cy. 800 x 3056, Mcr: 25,090 kW (34,112 hp) at 79 rpm

Thrusters

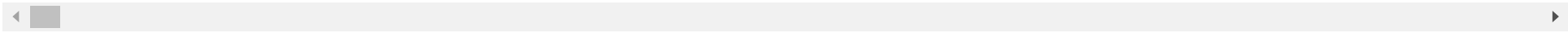
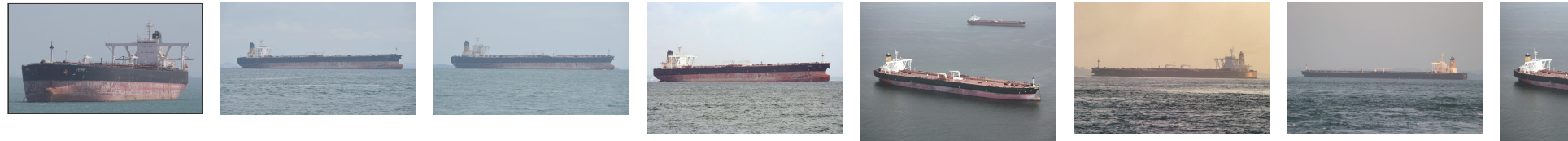
Photographs

Photo 1 of 383

SYFNOS

Photo Date: 2020-01-16

Copyright: Richard Fontaine



© 2022 IHS Global Limited. IHS Global Limited assumes no responsibility and shall not be liable to any person for any loss, damage or expense caused by reliance on the information or advice in this document or howsoever provided, unless that person has a contract with IHS Global Limited and in that case any responsibility or liability is exclusively on the terms and conditions set out in that contract.