

: THIS REPORT CREATED 16 Dec 2022 06:52

Ship Detail

Ship Name	HARMONIA	Shiptype	Crude Oil Tanker
IMO/LR No.	9400980	Gross	55,894
Call Sign	3E2785	Deadweight	105,380
MMSI No.	352001876	Year of Build	2008
Flag	Panama	Status	In Service/Commission
Operator	Koban Shipping LLC	Shipbuilder	Sumitomo Heavy Marine Yokosuka



Ownership

Group Owner	Koban Shipping LLC	Address Location	United Arab Emirates	Company No.	6134958
Shipmanager	Koban Shipping LLC	Address Location	United Arab Emirates	Company No.	6134958
Operator	Koban Shipping LLC	Address Location	United Arab Emirates	Company No.	6134958
DOC Company	Tin Hau Shipping Ltd	Address Location	Hong Kong, China	IMO Company No (DOC)	6095111
Registered Owner	Harmonia Lines Inc	Address Location	Marshall Islands	IMO Registered Owner No	6337214
Technical Manager	Tin Hau Shipping Ltd	Address Location	Hong Kong, China	Company No.	6095111
Bareboat Owner		Address Location		Company No.	

Ownership History

☒ Show extended history

Date	Name	Flag	Group Owner	Shipmanager	Operator	DOC Company	Registered Owner	Technical Manager	Bareboat Charterer	Price	Seq
2022-09						Tin Hau Shipping Ltd					00
2022-08								Tin Hau Shipping Ltd			00
2022-08							Harmonia Lines Inc				00
2022-08				Koban Shipping LLC							00
2022-08					Koban Shipping LLC						00
2022-08			Koban Shipping LLC								00
2022-08		Panama									00
2022-08	HARMONIA										00
2022-08						Unknown					94
2022-07										\$28,750,000	00
2011-01					Samos Steamship Co						93
2009-06					Sigma Tankers Inc						94
2008-07								Samos Steamship Co			95
2008-07						Samos Steamship Co					95

2008-07							Masthead Shipping SA				95
2008-07				Samos Steamship Co							95
2008-07					Samos Steamship Co						95
2008-07		Bahamas									95
2008-07	Oracle										95
2006-06			Samos Steamship Co								95

Originally Oracle

Registration, P&I, and Communications

Port of Registry	Panama	Flag	Panama
Official Number	55295PEXT	Sat Com ID	
Sat Com Ans Back		Fishing Number	
Current P&I Club	West of England		

P&I Club History

Date	P&I Club
2022-10-10	West of England
2008-07-07	UK P&I

Flag, Call Sign & MMSI History

Date	Flag	Port of Registry	Call Sign	MMSI
2022-08	Panama	Panama	3E2785	352001876
2008-07	Bahamas	Nassau	C6XF6	311007500

Crew List



No Data Available

Construction Overview

ShipType	Crude Oil Tanker	Built	2008
GT	55,894	Deadweight	105,380

Alterations & Conversion



No Data Available

Arrangement

Structure	Sequence (Bow to Stern)	Position	Type	Material	Length	Breadth
Tank	01	Cargo Tank	Port	Steel (Unspecified)		
Tank	02	Cargo Tank	Starboard	Steel (Unspecified)		
Tank	03	Cargo Tank	Port	Steel (Unspecified)		
Tank	04	Cargo Tank	Starboard	Steel (Unspecified)		
Tank	05	Cargo Tank	Port	Steel (Unspecified)		
Tank	06	Cargo Tank	Starboard	Steel (Unspecified)		
Tank	07	Cargo Tank	Port	Steel (Unspecified)		
Tank	08	Cargo Tank	Starboard	Steel (Unspecified)		

Tank	09	Cargo Tank	Port	Steel (Unspecified)
Tank	10	Cargo Tank	Starboard	Steel (Unspecified)
Tank	11	Slop Tank	Port	Steel (Unspecified)
Tank	12	Slop Tank	Centre Or Only	Steel (Unspecified)

Construction Detail

Ship Type Group:Tanker-Aframax; Statcode5:A13A2TV; Hull Type:Double Hull (Marpol); Hull Material:Higher tensile steel; Hull Connections:Welded; Decks:1 dk; Bulbous bow;

Recycling Detail (Broken up ships only)



No Data Available

Service Constraints

Trading, Commercial; Sea, Unspecified

Shipbuilder

2008-07 [Sumitomo Heavy Industries Marine & Engineering Co., Ltd. - Yokosuka](#) Yard/hull No.: 1343

Sister Ships

At most, the first fifty sister ships are returned. Click [here](#) to return all sister ships into Search Results.

LRNO	Ship Name	Status	Deadweight	GT	Built	Type	Yard No	Main Engine
9486922	ALBERTA	IN SERVICE/COMMISSION	104760	56326	2010-07	Crude/Oil Products Tanker	1361	6S60MC-C
9543536	ALEGRIA I	IN SERVICE/COMMISSION	104494	56326	2012-09	Crude Oil Tanker	1372	6S60MC-C
9411197	ASAHI PRINCESS	IN SERVICE/COMMISSION	105372	55909	2009-09	Crude Oil Tanker	1350	6S60MC-C
9364239	ATLANTIS	IN SERVICE/COMMISSION	105400	55898	2008-09	Crude Oil Tanker	1339	6S60MC-C
9524994	BLUE MOON	IN SERVICE/COMMISSION	104623	56326	2011-09	Crude Oil Tanker	1368	6S60MC-C
9413028	BLUE SEA	IN SERVICE/COMMISSION	105416	55863	2009-06	Crude Oil Tanker	1348	6S60MC-C
9413016	BLUE SKY	IN SERVICE/COMMISSION	105491	55863	2009-06	Crude Oil Tanker	1347	6S60MC-C
9524982	BRIOLETTE	IN SERVICE/COMMISSION	104588	56326	2011-04	Crude Oil Tanker	1367	6S60MC-C
9543524	EUROSTRENGTH	IN SERVICE/COMMISSION	104594	56326	2012-03	Crude Oil Tanker	1371	6S60MC-C
9514169	GREEN WARRIOR	IN SERVICE/COMMISSION	104626	56326	2011-03	Crude Oil Tanker	1363	6S60MC-C
9400980	HARMONIA	IN SERVICE/COMMISSION	105380	55894	2008-07	Crude Oil Tanker	1343	6S60MC-C
9413004	HORAE	IN SERVICE/COMMISSION	105419	55898	2009-02	Crude Oil Tanker	1346	6S60MC-C
9411185	ISE PRINCESS	IN SERVICE/COMMISSION	105361	55909	2009-07	Crude Oil Tanker	1349	6S60MC-C
9330472	IZUMO PRINCESS	IN SERVICE/COMMISSION	105374	55909	2007-03	Crude Oil Tanker	1328	6S60MC-C
9427471	JASMIN JOY	IN SERVICE/COMMISSION	104604	56326	2009-04	Crude Oil Tanker	1351	6S60MC-C
9380661	MARIA PRINCESS	IN SERVICE/COMMISSION	105346	55909	2008-10	Crude Oil Tanker	1342	6S60MC-C
9364215	NECTAR SEA	IN SERVICE/COMMISSION	105370	55894	2008-04	Crude Oil Tanker	1337	6S60MC-C
9361512	NEW ABILITY	IN SERVICE/COMMISSION	105381	55898	2008-01	Crude Oil Tanker	1335	6S60MC-C
9361524	NEW ACTIVITY	IN SERVICE/COMMISSION	105342	55898	2008-03	Crude Oil Tanker	1336	6S60MC-C
9380673	NIPPON PRINCESS	IN SERVICE/COMMISSION	105392	55909	2008-11	Crude Oil Tanker	1344	6S60MC-C
9521435	NORDROSE	IN SERVICE/COMMISSION	104583	56320	2012-05	Crude Oil Tanker	1365	6S60MC-C
9412995	OSPEROUS	IN SERVICE/COMMISSION	105355	55898	2009-01	Crude Oil Tanker	1345	6S60MC-C
9460564	P. YANBU	IN SERVICE/COMMISSION	105391	55909	2011-01	Crude Oil Tanker	1358	6S60MC-C
9543512	PARAMACONI	IN SERVICE/COMMISSION	104554	56326	2011-06	Crude Oil Tanker	1370	6S60MC-C
9514171	PEAK SPIRIT	IN SERVICE/COMMISSION	104621	56326	2011-06	Crude Oil Tanker	1364	6S60MC-C
9364227	PVT HERA	IN SERVICE/COMMISSION	105387	55898	2008-06	Crude Oil Tanker	1338	6S60MC-C
9460576	SAFEEN BARONESS	IN SERVICE/COMMISSION	105335	55909	2011-01	Crude Oil Tanker	1359	6S60MC-C
9358541	SAKURA PRINCESS	IN SERVICE/COMMISSION	105365	55909	2007-06	Crude Oil Tanker	1334	6S60MC-C

9486934	SAMOS	IN SERVICE/COMMISSION	104649	56326	2010-09	Crude Oil Tanker	1362	6S60MC-C
9439199	SAPPORO PRINCESS	IN SERVICE/COMMISSION	105354	55909	2010-04	Crude Oil Tanker	1356	6S60MC-C
9442017	SERENE SEA	IN SERVICE/COMMISSION	105244	55894	2009-10	Crude Oil Tanker	1352	6S60MC-C
9336842	SHALAMAR	IN SERVICE/COMMISSION	105315	55894	2006-11	Crude Oil Tanker	1327	6S60MC-C
9436941	SYRA	IN SERVICE/COMMISSION	105309	55898	2010-03	Crude Oil Tanker	1357	6S60MC-C
9552501	TAMANACO	LAID-UP	104636	56326	2012-04	Crude Oil Tanker	1374	6S60MC-C
9552496	TEREPAIMA	LAID-UP	104736	56326	2011-10	Crude Oil Tanker	1373	6S60MC-C
9486908	UNITED VENTURE	IN SERVICE/COMMISSION	105304	55909	2010-01	Crude Oil Tanker	1353	6S60MC-C
9439204	URAGA PRINCESS	IN SERVICE/COMMISSION	105344	55909	2010-07	Crude Oil Tanker	1360	6S60MC-C
9543500	YARE	IN SERVICE/COMMISSION	104579	56326	2011-03	Crude Oil Tanker	1369	6S60MC-C

Status History

Date	Status
2008-07-07	In Service/Commission
2008-05-15	Launched
2008-01-16	Keel Laid
2006-02-04	On Order/Not Commenced

Supplementary Features

Feature

ShipRight SERS	
BWMP(E)	
ESP	
IWS	
QUALSHIP 21	
IHM (Green Passport) Cert	
pt higher tensile steel	
Fuel Consumption Speed - Current Value	14.00
Total Fuel Consumption - Current Value	44.60
Total fuel capacity, in cubic metres	2766.00
Boiler Manufacturer	Alfa Laval Aalborg
Propeller Manufacturer	Nakashima

Cargo Overview

Grain	0	Bale	0	Liquid	97,766	Gas	0
TEU	0	TEU 14t	0	Insulated	0	Passengers	0
Bollard Pull (t)	0						

Capacities

Liquid @ 98% 97,766; Segregated Ballast 37,201; Slops 16,032; Cargo heating coils

Cargo Handling Gear

Cargo Pumps 3 @ 2,500 M3/hr

Compartments



No Data Available

Hatches



No Data Available

Ro-Ro (Lanes, Ramps & Doors)



No Data Available

Specialist

COW, IGS, SBT (Protective), Closed Loading, VRS - Vapour Recovery System, TVE Expires 2010-11-05, Slop Capacity 16,032, Stainless Steel Heating Coils, 57 Maximum Temp (Centigrade), SPM Equipped, 2 Tongue Bow Stoppers, 250t SWL, Flash Point Under 60c, 3 Lines (manifolds) per Side, 60.17m Mid Point Manifold Forward (Light), 105.54m Parallel Body Length (Light), 45.37m Mid Point Manifold Aft (Light), 69.69m Mid Point Manifold Forward (Ballast), 135.74m Parallel Body Length (Ballast), 66.05m Mid Point Manifold Aft (Ballast), 69.69m Mid Point Manifold Forward (Laden), 149.60m Parallel Body Length (Laden), 79.91m Mid Point Manifold Aft (Laden), 117.30m Bow to Centre Manifold, 0.406m Manifold Discharge Diameter

Tanks

5 Steel (Unspecified) Port Cargo Tank(s), 5 Steel (Unspecified) Starboard Cargo Tank(s), 1 Steel (Unspecified) Centre Or Only Slop Tank(s), 1 Steel (Unspecified) Port Slop Tank(s), 3 Grades (cargo segregations), Stainless Steel Heating Coils
Cargo Tank(s) partially coated, Slop Tank(s) partially coated

Machinery Overview

1 oil engine driving 1 FP propeller at 97 rpm Total Power: Mcr 12,350kW (16,791hp)Service Speed: 14.00kts Speed & Consumption: 14.00 knots on 44.60 tonnes per day

Auxiliary Engines

Design: Daihatsu, Engine Builder: Daihatsu 3 x 6DK-20, 4 Stroke 6Cy. 200 x 300, Mcr: 860 kW

Auxiliary Generators

3 x 800kW 450V 60Hz a.c.

Boilers

1 x Exhaust gas eEconomiser, 1 x Water tube auxiliary boiler

Bunkers

Fuel: distillate fuel: 248 cu m, residual fuel: 2,518 cu m

Speed (kn)	At Consumption (t)
14.00	44.60

Prime Mover Detail

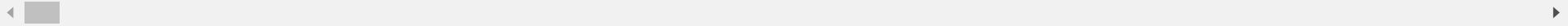
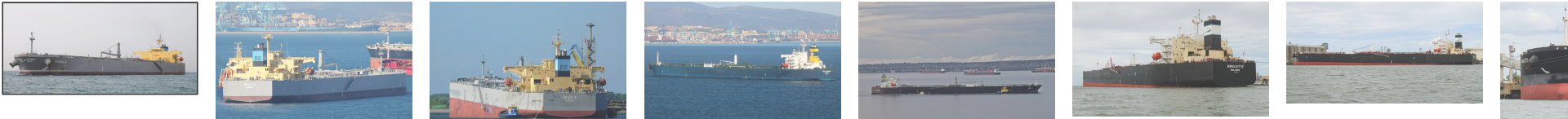
Design: MAN-B&W (Group: MAN-B&W), Engine Builder: Mitsui Engineering & Shipbuilding C Ltd - Japan 1 x 6S60MC-C, 2 Stroke, Single Acting, In-Line (Vertical) 6 Cy. 600 x 2400, Mcr: 12,350 kW (16,791 hp) at 97 rpm

Thrusters



No Data Available

Photographs



© 2022 IHS Global Limited. IHS Global Limited assumes no responsibility and shall not be liable to any person for any loss, damage or expense caused by reliance on the information or advice in this document or howsoever provided, unless that person has a contract with IHS Global Limited and in that case any responsibility or liability is exclusively on the terms and conditions set out in that contract.